

# 12/50 Waverley Street, Bondi Junction, NSW 2022



## Unit For Rent

Thursday, 30 May 2024

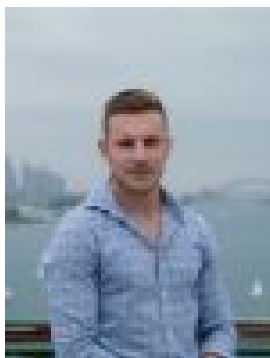
12/50 Waverley Street, Bondi Junction, NSW 2022

**Bedrooms: 1**

**Bathrooms: 1**

**Parkings: 1**

**Type: Unit**



Eduard Neyman

## **\$950 pet friendly**

Offering a modern lifestyle with everything at your fingertips, this 1 bedroom apartment is located within a 8 year-old "Cello" development and features;-Generously proportioned living room leading out onto a spacious balcony-Levelled lift access with intercom-No common walls-Gas kitchen with dishwasher-Separate, internal laundry-Secured parking via a car lift-Built in wardrobes-Sunny bedroom with a ceiling fan and BIWWith only moments to the Westfield Shopping Centre, Bondi Junction bus and train station and a short drive to Bondi Beach, this apartment is ideal for a busy professional looking for a convenient and a modern lifestyle.