

12/51 Copeland Road, Beecroft, NSW 2119

McGrath

Sold House

Wednesday, 20 September 2023

12/51 Copeland Road, Beecroft, NSW 2119

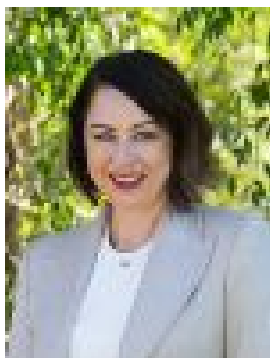
Bedrooms: 2

Bathrooms: 2

Parkings: 1

Area: 162 m2

Type: House



Belinda Hill
0294849300



David Woods
0422039565

\$1,450,000

A luxurious offering in a landscaped boutique complex of 18 residences, this exceptional apartment showcases a stunning design with superior finishes and lavish attention to detail. The essence of sophistication, the impeccable double brick haven reveals distinct living and dining spaces, an open plan layout and a timeless neutral palette. Conceived by the well respected Caxton Group combining Paul Meyer architectural design and quality building by Craig Young Homes. The boutique low rise complex built in 2013 offers a wonderful community atmosphere, with buses at the end of the driveway to Beecroft village/Castle Hill and a convenient location opposite the prestigious Pennant Hills Golf Club.

- Open living and dining space features a Realflame gas fireplace
- Elegant marble kitchen, stainless Miele appliances, integrated fridge
- Master retreat has extensive built-ins, luxury ensuite with freestanding tub
- Travertine outdoor entertaining area with an automatic Vergola awning
- Blackbutt floors, plantation shutters and custom built glass cabinetry
- Marble foyer, contemporary fully tiled bathroom, dedicated laundry
- Video intercom, zoned ducted air conditioning and abundant storage
- Single lock up garage plus visitor parking, native landscaped gardens