

12/68 Elizabeth Bay Road, Elizabeth Bay, NSW 2011

Raine&Horne.
Unlimited

Sold Apartment

Friday, 8 September 2023

12/68 Elizabeth Bay Road, Elizabeth Bay, NSW 2011

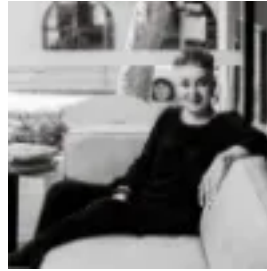
Bedrooms: 1

Bathrooms: 1

Type: Apartment



Samuel Schumann
0280671000



Jane Schumann
0280671000

Contact agent

Art Deco elegance meets contemporary style at this oversized one-bedroom apartment in a prized village setting between Potts Point's fashionable dining scene and harbourside Rushcutters Bay Park. Framed by leafy outlooks from wide windows, the light-filled apartment is on Level 3 of The Raymond, a classic c1929 building with a timber-panelled foyer featuring a magnificent stained-glass coffered ceiling. Enjoy high ceilings, natural light and a generous feeling of space in this peaceful sanctuary. Features- Spacious living/dining area with leafy outlook - Caesarstone kitchen with generous storage- Gas cooktop, electric wall oven, dishwasher- Large bedroom with wardrobe and leafy vista- Modern bathroom with shower, separate toilet- Concealed washing machine in bathroom - High ceilings, polished timber floors, picture rails- Level lift access, beautifully restored original lift - Security building with elegant Art Deco foyer- Cafes & buses at doorstep, 60m to local shops - 250m* to Macleay Street shopping and dining- 250m* to weekend food markets in Fitzroy Gardens- 250m* to Beare Park, 570m* to Kings Cross train station* Denotes approximate