

12/7 Felix Street, Lutwyche, Qld 4030

GRACZYK THOMPSON

Apartment For Rent

Monday, 15 April 2024

12/7 Felix Street, Lutwyche, Qld 4030

Bedrooms: 2

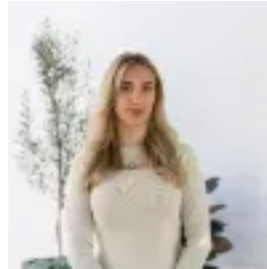
Bathrooms: 2

Parkings: 1

Type: Apartment



Blair Mutch
0737067248



Ashleigh Leavitt
0737067248

\$670 per week Brand New Build

Introducing 'The Sun,' a newly constructed apartment complex in the heart of Lutwyche, designed for modern living and convenience. This brand-new build, completed in April 2024, offers a contemporary lifestyle within walking distance to vibrant shops, dining precincts, public transport options, and the serene Kedron Brook walking and cycling trails. Step into luxury with the open-plan design of this corner unit, boasting a light-filled living area seamlessly blending with a modern kitchen and dining space. Entertain or unwind on the large covered balcony, enjoying views of the surrounding area. The chef's kitchen is a culinary delight, featuring an electric cooktop, dishwasher, breakfast bar, and ample storage for all your needs. The apartment is designed for comfort and style, with floorboards throughout the living areas and plush carpet in the bedrooms. The spacious main bedroom is a retreat with large air-conditioning, built-in robes, and an ensuite bathroom. The second bedroom is serviced by the main bathroom, complete with a shower over bath and additional storage. Convenience is key, with an internal laundry and NBN readiness for seamless connectivity. 'The Sun' complex offers more than just a beautiful apartment. Enjoy peace of mind with secure access, lift facilities, intercom for added security, and onsite visitor parking for guests. Location is paramount, and 'The Sun' delivers. Take a leisurely two-minute stroll to the Kedron Brook bikeway and nearby parks or explore the Lutwyche Marketplace just a short walk away. Commuting is a breeze, with Brisbane CBD only 10 minutes by car and Brisbane airport terminals a convenient 15-minute drive. Embrace the local lifestyle with a selection of boutique cafes, dining options, and shopping experiences right at your doorstep. Experience the epitome of modern living and convenience at 'The Sun.' *Photos are of a similar unit in the complex

***Apartment Features:-** Brand new build - April 2024! - Open plan kitchen, living and dining space - Corner unit with light filled living area and bedrooms - Large covered balcony - Chef's kitchen complete with; electric cooktop, dishwasher, breakfast bar and lots of storage - Spacious main bedroom with air-conditioning, built-in robes and ensuite - Main bathroom accommodates second bedroom with shower over bath and ample storage - Floorboards to living areas and plush carpet to bedrooms - Internal laundry - NBN ready

Building Features:- Secure complex - Lift access - Intercom - Onsite visitor parking

Location and Transport:- Two minute stroll to Kedron Brook bikeway and parks - Short walk to Lutwyche Marketplace - 10 minutes drive to Brisbane CBD - 15 minute drive to Brisbane airport terminals - Only 800m walk to Wooloowin Train Station and a mere 200m Lutwyche Bus Station (Northern Busway) - Selection of boutique cafes, dining and shopping nearby - Upcoming Lamington Markets due to be built with cinemas, indoor market and brewery

Please contact our leasing agent Blair on 0468 791 950 or blair@gtpartners.com.au to book an inspection of this property. Please ensure you register for any inspection you are wanting to attend so that should we need to cancel the inspection for any reason, we are able to notify you of this change.* Every care and due diligence has been taken in the preparation of this listing. The agency and owner assume no responsibility for the accuracy of the content, and encourage all prospective tenants to conduct their own research.