

12 Ameling Rise, Fremantle, WA 6160

Sold House

Saturday, 2 December 2023

12 Ameling Rise, Fremantle, WA 6160

Bedrooms: 5

Bathrooms: 3

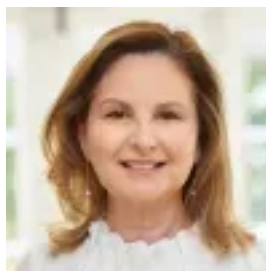
Parkings: 4

Area: 670 m2

Type: House



Stefanie Dobro
0893192024



Connie Handcock
0893192024

\$2,650,000

Nestled within an exclusive elevated enclave, offering sweeping vistas that stretch over the rooftop of Fremantle to the captivating ocean beyond, this remarkable custom-built residence is a true embodiment of a distinctive lifestyle opportunity. Set on a generous 670sqm parcel of elevated land, this architecturally designed, eco-conscious home spans three levels, featuring five bedrooms, three bathrooms and three spacious living areas. It has been meticulously crafted by one of Perth's renowned builders, Vicore Construction, bringing to life the owners' vision of a luxurious, light-filled and eco-conscious family residence harmoniously integrated with the natural rocky limestone knoll landscape overlooking Fremantle. Accessed via internal stairs from the garage or external stairs leading to an east-facing balcony, where you can savour your morning coffee, the main level welcomes you with a soaring ceiling foyer, seamlessly transitioning into an open-plan kitchen, living, and dining area. High ceilings, beautiful spotted gum floors, a gas-fireplace and mesmerising views over Fremantle rooftops to the ocean beyond create a relaxed holiday-house ambiance. Expansive walls of glass to the east and west bring the outdoors into the heart of this residence. The designer kitchen features an island bench with waterfall stone benchtops, top-quality appliances including dual ovens and a 900mm gas cooktop, and a scullery. This culinary haven effortlessly flows to a sizeable sundeck, offering views of the pool area and the surrounding landscape. On this level to the east, you'll find three minor bedrooms, each with built-in robes and desks, a family bathroom, and a second living area, perfect for the kids to hang out in. Ascend the stunning floating staircase to reach the treetops, where the master suite occupies the entire top floor. This peaceful retreat offers sweeping ocean views, a sumptuous ensuite with dual basins, a separate shower, and a deep bath for relaxation, as well as a dressing room. Descending to the lowest level, you'll discover a versatile space designed for independent living. It includes a fifth bedroom, a third bathroom, and a third living area, ideal for adult children, guests, or even an au-pair. A family-sized laundry complete with laundry chute and access to a drying court is also located on this level. The cleverly designed backyard boasts a tropical-inspired oasis, complete with a solar-heated pool set against a magnificent natural limestone rock wall. An inviting alfresco area, featuring a Ziegler and Brown Turbo Elite five-burner barbecue, offers a haven for both relaxation and recreation—a space your family will treasure. Enhancing the appeal, year-round comfort and energy efficiency of this remarkable family home are features such as double-glazed windows throughout, zoned ducted reverse-cycle air conditioning, hydraulic heating, a gas fireplace, Cat 6 cabling, CCTV surveillance, an automatic remote-controlled gate, and solar panels. Expansive aggregate paving, flanked by reticulated landscaped gardens, together with an oversized double car garage means there's ample parking for family and guests alike. Tucked away behind an electric gate, in a serene and secluded location among the trees on a limestone knoll, yet just moments from the vibrant atmosphere of Fremantle, this home offers multiple zones for luxurious yet relaxed indoor and outdoor living and entertaining. There's ample space for everyone to find their place and truly feel at home.

- Architecturally designed home- Sweeping Ocean Views- Eco-friendly construction- Spotted Gum Timber Floors- Double Glazing- Zoned Ducted Reverse Cycle Air Conditioning- Hydraulic Heating- Designer Kitchen with Scullery- Luxurious Stone Finishes- Great separation for families- Full floor master suite amongst the treetops with sweeping views- Laundry Chute- Heated Swimming Pool- Cat 6 Cabling Throughout- Solar Power for Sustainability- Secure gated entry with parking for 4 cars- CCTV- Walk to Fremantle's shops, cafes, restaurants, Wray Avenue, schools and transport