

12 Battery Street, Clovelly, NSW 2031



Sold House

Sunday, 13 August 2023

12 Battery Street, Clovelly, NSW 2031

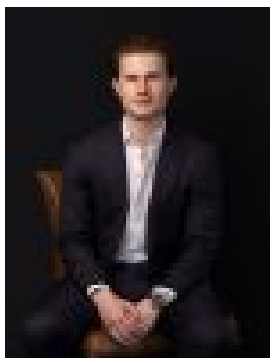
Bedrooms: 6

Bathrooms: 6

Parkings: 3

Area: 740 m2

Type: House



Edward Quince
0474276695

Contact agent

Discover a luxurious resort-style family haven secluded amid landscaped gardens on a private 740sqm approx landholding overlooking Gordons Bay with panoramic ocean views over the famed Bommie surf break as a captivating backdrop. One of only a handful of homes backing onto the Bronte-Coozee Aquatic Reserve with direct access to marine reserve and the coast walk, this architectural triumph was designed by acclaimed architects Dods and Zuccon to offer the ultimate in oceanfront living with an innovative pavilion style layout that is saturated in light and airy with a walled internal courtyard featuring a 12m mosaic-tiled pool as a sparkling centrepiece. With multiple living and entertaining spaces and views that will never be built out, the six-bedroom home has undergone a bespoke renovation with interiors that bring a joyful vibe with layered textures, artisan finishes and splashes of colour to create a home that is rooted in nature yet magnificently modern. Spread over three levels with lift access from triple garaging, this private retreat features a host of prestige features including a show-stopping kitchen, sanctuary like parents retreat, home office and rumpus room.- Glamorous entry foyer, travertine and European Oak floors- 6 large bedrooms, custom built-ins, 6 luxurious bathrooms- 4 bed on one level, guest suite/ 5th bed, separate one bed apartment with a with walk in robe, courtyard with a private entry- Parents retreat, ocean-view balcony, dual walk-in robes- Ensuite with double marble vanity and a freestanding bath- Sun-drenched home office overlooking the 12m pool- High-spec entertainers kitchen with a butlers pantry- Gaggenau appliances, Miele dishwasher, Zip HydroTap- Huge open living/dining flows to an ocean-view terrace- Direct access to ocean reserve and idyllic Gordons Bay- Family/TV lounge, custom daybeds, barbecue courtyard- Huge rumpus room, custom V-groove joinery, wine cellar- Self-contained one bedroom studio, WIR, with private access- Landscaped gardens by Will Dangar and 360 Degrees- C Bus system, auto blinds, designer lighting, gas fireplace- Triple LUG with lift access, zoned air, underfloor heating- Walk along the coast to Clovelly, Bronte and Bondi Beaches- 450m to The Clovelly Hotel, 600m to Clovelly Beach, stroll to cafes, delis and yoga studios