

12 Chipmunk Court, Zuccoli, NT 0832



Sold House

Wednesday, 11 October 2023

12 Chipmunk Court, Zuccoli, NT 0832

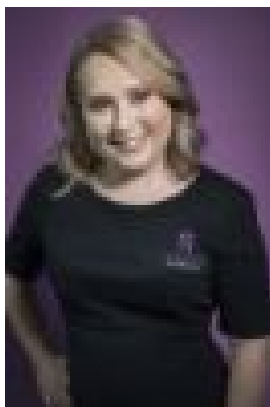
Bedrooms: 4

Bathrooms: 2

Parkings: 2

Area: 1000 m2

Type: House



Lee-Ann Schey

Contact agent

Located within the premier suburban setting of Zuccoli, this modern home has unrivalled location close to parklands with play areas for the family, schools, shops and walking paths that wind throughout this lux family minded neighbourhood - move in and enjoy the perks of living within this master planned suburban setting. The Home has dual garage parking along with internal laundry amenities hosted within and side parking for the boat or trailer as well. An internal sliding door leads through to the open plan living and dining areas that have a gourmet kitchen with stone topped island bench and dual opening sliding doors that lead through to the verandah and easy outdoor entertaining areas. 4 big bedrooms all with Ac and large windows to let in the natural light and soft breezes. The master is positioned at the rear with walk in robe and ensuite bathroom with dual vanity. The main bathroom includes a relaxing bath tub and shower with vanity that houses storage. Outside the home overlooks the easy care gardens and lawns where the kids and pets can play with massive amounts of green lawns to kick a footy or add in the trampoline. Established tropical gardens add to the home. Tenanted until 18/01/2024 Weekly rent \$700.00 per week. Master planned suburban setting 4 bedroom family home with 2 bathrooms Dual garage parking, side parking and gated entry to the garage Laundry amenities hosted within the open garage Side yards, rolling green lawns and plenty of outdoor spaces for the kids Open plan living and dining areas open via sliding door to verandahs Verandahs overlook the yard making it easy to entertain or relax Master bedroom is rear facing with walk in robe and ensuite bathroom Main bathroom includes a bath and shower, modern clean design Oversized family home perfect for the big family Close to public and private schools along with daycare options Local shops, IGA and parklands nearby too