

**12 Chippendale Avenue, Fulham, SA 5024**



**Other For Sale**

Thursday, 30 November 2023

12 Chippendale Avenue, Fulham, SA 5024

**Bedrooms: 4**

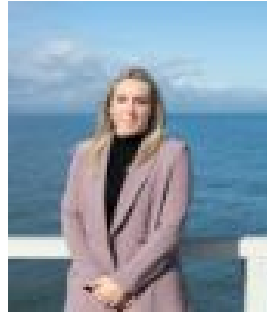
**Bathrooms: 3**

**Parkings: 2**

**Type: Other**



Mark Bowden  
0408441126



Tyra Hennessey  
0408077666

## Best offer by Tues 19th Dec at 5pm

Step into the charm of mid-century modern living with this exquisite home. Nestled in a serene neighbourhood on a beautiful tree lined street, this meticulous property seamlessly blends classic mid-century architecture with modern amenities. Large windows invite abundant natural light, highlighting the sleek lines and open spaces that define this timeless style. As you enter this luxurious residence, the journey begins in a serene courtyard, a prelude to the opulence that awaits within. Crossing the threshold, you step into an elegant foyer that seamlessly merges sophistication with a touch of resort-inspired allure. The foyer serves as a gateway to a haven of comfort and style, offering expansive views of a glistening swimming pool. This spacious residence offers up to four bedrooms, designed to cater to both personal comfort and professional versatility. The three bedrooms in a separate wing provide a private haven for rest and relaxation, accompanied by a generously sized retro bathroom that exudes luxury. The master bedroom stands out with its updated en-suite, ensuring a sophisticated retreat for the homeowners. Adding a unique dimension to the layout, the fourth bedroom serves a dual purpose, equipped to function as a consulting room or office. With its personal direct access outside, this room offers convenience for professional meetings or consultations without compromising the privacy of the rest of the living spaces. This thoughtfully designed home seamlessly balances personal and professional needs, providing a versatile and harmonious living experience. This modern kitchen has undergone a captivating transformation, embracing the timeless charm of mid-century design. The renovation pays homage to the aesthetic of the past while seamlessly integrating contemporary conveniences. Sleek lines, minimalist cabinetry, and a muted colour palette define the space, capturing the essence of mid-century modernism. The carefully chosen fixtures and appliances subtly nod to the era's iconic design elements. The result is a kitchen that exudes both functionality and style, where cutting-edge technology coexists harmoniously with the enduring allure of mid-century aesthetics. It's a culinary haven that marries the best of the past and present, creating a space that is not just a kitchen but a work of art in its own right. The heart of this contemporary dwelling unveils a seamless blend of functionality and aesthetic appeal in its open-plan dining and living area. Designed to foster a sense of togetherness, the space effortlessly connects the dining room and living area, creating an inviting atmosphere for both intimate gatherings and lively socialising. A distinctive focal point within this dynamic setting is the sunken lounge, adorned with a gas log fireplace. The sunken design adds a touch of architectural intrigue, creating an intimate enclave where conversations flow naturally around the warm glow of the fireplace. This thoughtful integration of elements not only enhances the overall aesthetic but also ensures that the living space becomes a versatile haven, perfect for both relaxed evenings and stylish entertaining. This meticulously landscaped oasis of approximately 780m<sup>2</sup> is a true haven for relaxation and entertainment, featuring a state-of-the-art 6-person hot rock sauna and outdoor bathroom nestled amidst lush greenery. The enchanting patio area invites you to bask in the serenity of the outdoors, providing a perfect setting for al fresco gatherings or tranquil moments of solitude. Immerse yourself in the allure of this unparalleled retreat, where the seamless blend of nature and opulence creates an idyllic sanctuary to call home. All this and more in the ever popular Fulham with ease of access to a fulfilling lifestyle, including but not limited to: walking and bicycle trials to Adelaide's most popular beaches and CBD as well as being situated within close driving and public transport proximity to the Adelaide Airport, Fulham Gardens shopping precinct, Harbour Town, Henley Square, restaurants and eateries, great schools both private and public alike, numerous parks and reserves. With its thoughtfully preserved mid-century elements and contemporary upgrades, this house is a perfect fusion of past and present- a true haven for those seeking style and comfort.