

12 Creekside Circuit, Hillside, Vic 3037

Residential Land For Sale

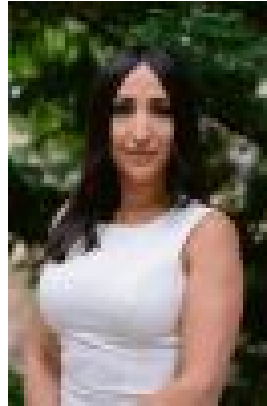
Thursday, 13 June 2024

12 Creekside Circuit, Hillside, Vic 3037

Type: Residential Land



Anthony Orellana
0468629408



Kimberley Galea
0478073711

\$460,000 - \$505,000

Proudly presenting one of the last opportunities to secure vacant land in Hillside's coveted Stonybrook Estate, located directly opposite the lake and Pekin Weir, nestled on the banks of Stony Hill Creek. With a sizable allotment of 375sqm (approx.) and established homes on either side, all that's left to do is build your dream home on this blank canvas (STCA). Located within a long-established community, Stonybrook unlocked previously untouched land in a thriving area, with plenty of amenities nearby. Dedicating 30% of the estate to green spaces, the block is well connected with nature, including immediate access to walking tracks along Stony Hill Creek, with easy links to The Regency Reserve and playground, Hillside Recreation Reserve, and Sugargum Reserve. Highly walkable, stroll to Wattle Valley Drive shops and eateries, including Foodworks Supermarket, Sanctuary Road professional services and casual dining options, and excellent educational institutions, including Bellevue Hill Preschool and Sydenham-Hillside Primary School. With excellent location connections, bus route 463 is reached within minutes, while Watergardens Shopping Centre & Railway Station are only a short drive away. To venture further, the Calder Freeway provides ease of access across Melbourne, including to the city, airport, and onto regional Victoria.