

12 Eliza Place, Panorama, SA 5041

GaryJSmith

House For Rent

Tuesday, 30 April 2024

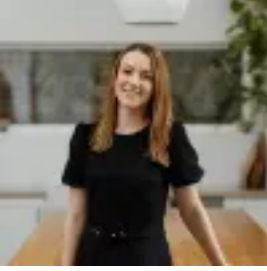
12 Eliza Place, Panorama, SA 5041

Bedrooms: 3

Bathrooms: 1

Parkings: 3

Type: House



Laura Walker
0417872543

\$600 per week

Solid family home, situated within easy walking distance of parks and reserves including CC Hood Reserve (dogs welcome) and playground and Mortlock Park. Located within 5 minutes drive to Pasadena Green & Foodland (Adelaide's finest supermarket) and similar distance to Mitcham Square for shopping. Zoned for Unley High School and close by for access to Clapham, Clovelly Park and Edwardstown Primary Schools. Just a 15 minute walk to train station and 5 minutes to bus.

- Light and bright front spacious lounge room with reverse cycle air-con
- Central dining room
- Neat basic kitchen, functional with gas upright stove and cooking
- 3 bedrooms – Master east facing with ceiling fan and built-in robe, ceiling fan also in 2nd bedroom
- Timber floors throughout
- Renovated modern bathroom with shower, vanity and toilet
- Second toilet for convenience
- Renovated laundry
- Rear verandah for entertaining
- Carport and driveway parking
- Huge double car garage / shed with concrete floor
- Neat lawned back yard
- Easy care low maintenance front yard recently established to shrubs with dripper system

Pets considered
12 month lease
Tenant pays water use & supply

IMPORTANT INFORMATION FOR ARRANGING TO VIEW THE PROPERTY
Priority consideration and viewings will be given to those who apply and submit references via www.tenantoptions.com.au. If you do not pre-apply you may not be contacted or advised of any upcoming viewing times, preference will be given to those who apply first and qualify. Please supply as much information as possible in your application. If you have questions email is preferred.