

12 Ensign Street, Carindale, Qld 4152

House For Rent

Wednesday, 10 January 2024



12 Ensign Street, Carindale, Qld 4152

Bedrooms: 4

Bathrooms: 2

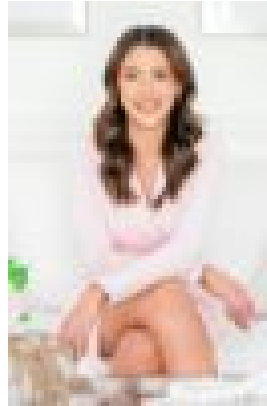
Parkings: 2

Area: 600 m2

Type: House



Karen Herbert
0733473737



Madeline Walsh
0733473737

\$1200 Executive Living

Nestled in a serene and peaceful street, this residence not only promises an incredible lifestyle but also offers unparalleled convenience, making it a true haven for family entertainment. Moreover, its enviable location places it within the sought-after school catchments of Belmont Primary and Mansfield High, adding an extra layer of appeal for families. Upon entering, you are greeted by an abundance of natural light that floods the interior, creating a warm and inviting atmosphere. The layout cleverly combines functionality with elegance, with formal lounge and dining zones thoughtfully positioned at the entrance. This home seamlessly blends comfort and style, providing a retreat that balances the hustle and bustle of everyday life with a private and serene living environment.

Features You Will Love:- The generously sized main entrance serves as a focal point, providing access to various key areas, including the double lock-up garage with additional storage, an entry hall, and a staircase leading to the upper level- Designed with a spacious floorplan, the home boasts a large open-plan family living/dining room seamlessly connected to a modern kitchen- Each room is equipped with air-conditioning, complimented by fly screens and brand new roller blinds to ensure optimal year-round interior comfort- Outside, the wrap-around low-maintenance grounds feature an inviting patio and a fully fenced rear yard- Transitioning to the upper level, the well-proportioned main landing creates a sense of separation between the bedrooms- The air-conditioned master suite is notably spacious, characterized by high ceilings, a walk-in robe, and a full ensuite- Three additional light-filled bedrooms with built-in wardrobes, a sizable family room, and a central bathroom complete the upper level- One of the distinctive features of this home is the incorporation of natural breezes that flow throughout, enhancing the living experience and offering delightful valley views

Location and Lifestyle:- Located within the Belmont State School and Mansfield State High School catchments- 170m walk to Grandview Park Playground- 7min drive to Westfield Carindale giving residents access to a huge variety of specialty shopping, restaurants + entertainment- Quick access to bus links to reach Brisbane CBD or local universities with ease- Close proximity to the gateway + major arterials to travel North or South- Water usage charges apply

Please register to inspect.*Note: Updated photography will be uploaded shortly. Listing photos are from 2020 and are not a true depiction of the property's current state. Feature walls have been painted and updates made to the bathrooms.