

12 Illyarrie Avenue, Surrey Downs, SA 5126

ALL ADELAIDE

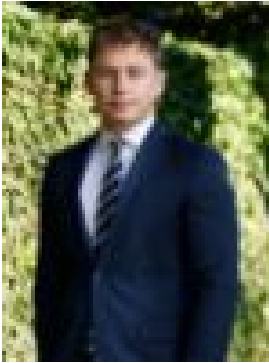
Residential Land For Sale

Friday, 12 April 2024

12 Illyarrie Avenue, Surrey Downs, SA 5126

Area: 308 m2

Type: Residential Land



Blake Bryant
0476957176

Best Offers By: Tuesday 30th of April

Step into the serene embrace of suburban bliss with this exceptional 308sqm parcel of land, situated in the coveted locale of Surrey Downs. Just a mere five-minute drive from bustling hubs such as Tea Tree Plaza, Modbury Hospital, and esteemed Golden Grove private schools, convenience meets tranquility in this prime location. But the allure doesn't stop there. Immerse yourself in the natural beauty of the surroundings, with charming parks featuring picturesque duck ponds within walking distance. Perfect for leisurely strolls and family picnics, these green spaces offer a sanctuary amidst the hustle and bustle of everyday life. Commuting is a breeze with a bus stop conveniently positioned across the road, providing seamless access to Modbury interchange and beyond. Additionally, an alternative bus stop is a mere 5-minute walk to the main road, ensuring connectivity is always within reach. The potential of this land is as vast as your imagination. Envision building your dream family home, a stylish investment property, or a cozy retreat where cherished memories will be made. With endless possibilities for customization and personalization, this blank canvas eagerly awaits your creative touch. Why you'll love it: * Prime Surrey Downs location: Coveted suburban bliss. * Convenient access to amenities: Nearby hubs and schools. * Natural beauty surrounds: Charming parks within walking distance. * Seamless commuting options: Bus stops nearby for easy access. * Endless customization possibilities: Build your dream home. * Seize your slice of paradise: Don't miss out. Don't miss out on the opportunity to secure your slice of suburban paradise. Seize this golden chance to turn your vision into reality and embark on a journey of building your future in the heart of Surrey Downs. The time is now to make your dreams a reality.