

12 Inglewood Way, Glengarry, Vic 3854

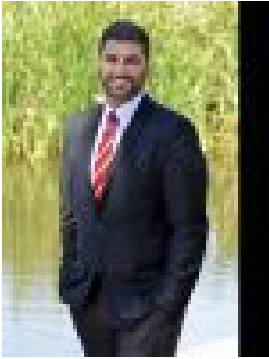
Residential Land For Sale

Friday, 26 April 2024

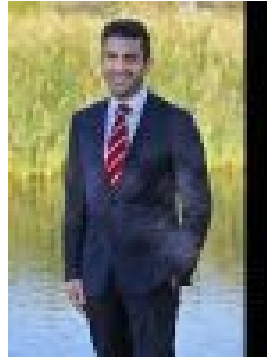
12 Inglewood Way, Glengarry, Vic 3854

Area: 997 m2

Type: Residential Land



Jorjesen Demetrios
0488058020



George Demetrios
0351741833

\$330,000

997m2 allotment (approx.) in the heart of Phoenix Park, opposite wetlands and walking distance the café, pub, school, IGA & other retail facilities+ Titled residential blocks in a tightly held town+ Great flat 997m2 block + Private wet lands & stunning views+ Picturesque landscapes, lush green spaces, gorgeous post and rail fencing + Surround by families and a lovely demographic of people all enjoying their dream homes+ North side fencing to be completed Section 32 available on request to discuss in more detail contact Stockdale & LeggoJorjesen Demetrios 0488 058 020 George Demetrios 0413 776 303