

12 Lawrence Street, Castlemaine, Vic 3450



House For Sale

Tuesday, 19 March 2024

12 Lawrence Street, Castlemaine, Vic 3450

Bedrooms: 3

Bathrooms: 1

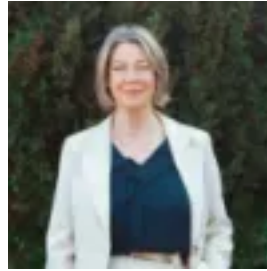
Parkings: 2

Area: 575 m2

Type: House



Jeremy Bottomley



Carole Lenander
0354721155

\$775,000

Castlemaine is loved for its period homes, its scratchy landscape of undulating hills and its vibrant town culture that has taken Northcote's best attributes and placed them in a village setting. This new listing gives a firm nod to each of these; it's a charming 1950s weatherboard, taking in neighbourhood views and walking distance to schools, shops and eateries. The home presents a sweet period façade to the street, complete with a picket fence, raised front verandah and low maintenance garden beds with fresh native plantings. An olive green and cream paint scheme tastefully links the home, fence and pitched carport. Inside there are three bedrooms or two and a rear study. The cosy front lounge room has a gas heater set within the original brick mantelpiece. Look up and admire the decorative ceiling rose, another also staring in the wide hallway. Noteworthy, recent updates include plantation shutters, plush carpet, vinyl plank flooring, ceiling fans and a full restump. The central bathroom is set to impress with patterned black and white floor tiles and a shower over the new bath. The eat in style kitchen has also been refurbished and features stone bench tops, ample cupboard space and an upright stove. Note the cosy wood heater and split system here, ensuring your comfort throughout the seasons. A rear sunroom extends your dining options or would be an ideal playroom. From here, step out onto the undercover deck. The additional loo is ideal when entertaining. A second alfresco space with a sealed base provides a fun home project. Add some timber cladding, pot plants and a pizza oven for instant personality and a space to be celebrated year-round. A small lawn area within the secure yard will keep kids or pets happy. A shed provides valuable storage space or perhaps you will follow the savvy trend of a conversion into an additional bedroom/living space. Seize the opportunity to make this home-sweet-home your own where comfort and convenience meld in a quintessential Castlemaine setting.