

12 Lime Street, New Farm, Qld 4005



Sold House

Thursday, 7 December 2023

12 Lime Street, New Farm, Qld 4005

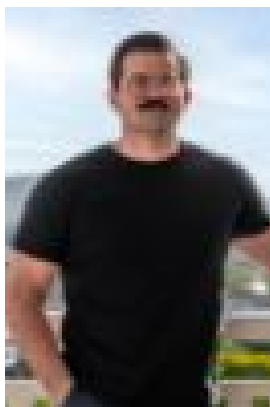
Bedrooms: 3

Bathrooms: 1

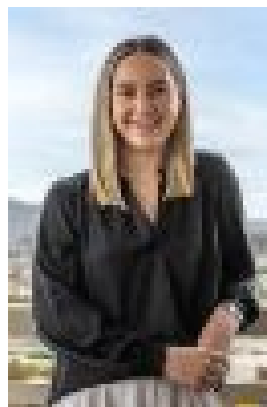
Parkings: 4

Area: 298 m2

Type: House



Emmanuel Calder
0730638035



Alexandra O'Brien
0730638035

Contact agent

Discover a rare gem in the heart of New Farm, where comfortable indoor living seamlessly merges with outdoor charm. Situated in the highly sought-after New Farm, just moments away from James Street, Teneriffe, and New Farm Park, this residence promises unparalleled convenience and laid-back living. Step into this spacious home as you're welcomed by an open plan living area that flows into the kitchen and through to the 3-bedrooms. The open-plan design extends to a large outdoor patio, ideal for unwinding or entertaining friends and family. The northeast-facing backyard bathes the space in natural light, offering a perfect retreat. Parking is a breeze with secure space for two cars underneath and an additional two on the side access driveway leading to the backyard. The 11.1m frontage complements the 298 sqm property, creating a low-maintenance block that allows you to focus on enjoying the lifestyle New Farm has to offer. For those with an eye for character, this home boasts unique features that set it apart. LMR zoning opens up exciting potential for development, making this an attractive proposition for savvy investors or those eager to create their ideal residence in an unbeatable location. Key Features: • 11.1m frontage • 298 sqm block • Side access to the backyard • 2 cars underneath + 2 on side • Northeast-facing backyard • Low maintenance block • Council rates \$617.25 p/q • Off street parking • LMR zoning Enjoy the perks of a vibrant lifestyle with easy access to public transportation, including buses and trains, making it a breeze to discover all that Brisbane has to offer. Embrace the cosmopolitan charm of New Farm, with cafes, restaurants, and the ever-popular New Farm Park right at your doorstep. Explore nearby attractions such as James Street and Howards Smith Wharves, where boutiques, eateries, and more await your discovery. Don't miss this rare opportunity to own a piece of New Farm. Seize the chance to make this exceptional property yours and immerse yourself in New Farm's unparalleled lifestyle!