

# 12 Marong Court, Broadmeadows, Vic 3047

## House For Sale

Monday, 8 January 2024

12 Marong Court, Broadmeadows, Vic 3047

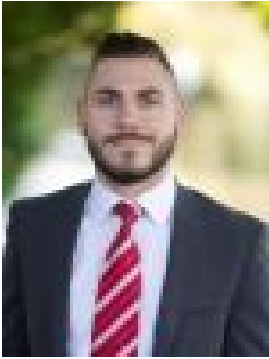
Bedrooms: 3

Bathrooms: 1

Parkings: 5

Area: 700 m2

Type: House



Daniel Imbesi  
0393060422

## **\$510,000 - \$560,000 Private Sale**

Nestled into a quiet court location is this well maintained three-bedroom residence. Packed with potential and sitting on a generous allotment of land measuring 700m<sup>2</sup> (approx.), your options are simply endless here no matter whether you are looking to live in or invest. Extremely well situated, in close proximity to Hume Central Secondary College, Broadmeadows train station, Seabrook Reserve and bus stops on Blair Street, this is simply one you won't want to miss!

**PROPERTY SPECIFICATIONS:** - Three generous sized bedrooms with natural timber flooring and built in robes, with ceiling fans in two bedrooms- Kitchen boasting timber cabinetry, laminate benchtops, upright 600m oven, rangehood and plenty of cupboard space- Lounge/dining area soaked with plenty of natural light, complimented with natural timber flooring, air-conditioner, ceiling fan and log fireplace- Centrally located bathroom offering combined shower/bath, single vanity and separate toilet- Full-sized laundry with external access and built in cupboards- Outdoors, an undercover pergola perfect to entertain under, mixed concreted and grassed areas at the rear and a bungalow- Lock up carport and a single garage with 2+ additional off street car spaces- Other features include: ducted heating, air-conditioning, two garden sheds, great storage, security doors and more

**KEY LOCATION BENEFITS:**- 650m (approx.) to Hume Central Secondary College- 1km (approx.) to Broadmeadows Early Learning Centre & St Dominic's Primary School- 1km (approx.) to Sirius College- 1.2km's (approx.) to Seabrook Reserve- 1.2km's (approx.) to Broadmeadows Train Station- Bus Services on Blair Street taking you through to Broadmeadows & Upfield- Broadmeadows is located approximately 14km's from the CBD with easy access to City Link, Ring Road, Tullamarine Freeway and the Airport.