

12 Opal Mews, Hawley Beach, Tas 7307

PROPERTYCIRCLE

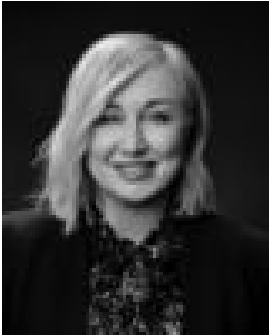
Sold Residential Land

Friday, 1 September 2023

12 Opal Mews, Hawley Beach, Tas 7307

Area: 548 m2

Type: Residential Land



Sharyn Crack

Contact agent

12 Opal Mews offers solid foundation to build your dream home in an advantageous location in the Hawley Beach Estate. This 548m² allotment offers the opportunity to be part of a growing and vibrant community. The level but elevated nature of the land ensures that potential buyers can enjoy sea views and surrounding landscapes with either a single or double storey dwelling. The property being built on the northern side is single storey. The presence of already connected power and water services further enhances the appeal. With these essential utilities in place, buyers can save time and effort during the development process. Only a short walk to the beautiful Hawley Beach where you can explore or just sit and enjoy the scenery that's on offer. Hawley Beach is the ultimate lifestyle choice on the north-west coast of Tasmania. Additionally, the convenience of being only 17 minutes from Devonport, 10 minutes to the airport and 15 minutes to the Spirit of Tasmania underscores the property's accessibility and connectivity. Call Sharyn Crack for further information.

**Property Circle Tas has no reason to doubt the accuracy of the information in this document which has been sourced from means which are considered reliable, however we cannot guarantee accuracy. Prospective purchasers are advised to carry out their own investigations. All measurements are approximate.