

12 Richmond Avenue, St Ives, NSW 2075



House For Sale

Friday, 2 February 2024

12 Richmond Avenue, St Ives, NSW 2075

Bedrooms: 4

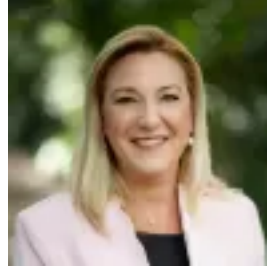
Bathrooms: 3

Parkings: 2

Type: House



David Beveridge
0296462075



Felicity Gooley
0294499066

Auction Saturday 24 February, 3pm

Discover an outstanding entertainer's paradise in this exceptional home that nestles in a community minded pocket and provides a wonderful lifestyle for the family. North facing on its generous 980sqm, the enormous backyard has been transformed with its vast covered terrace complemented by a designer heated pool and versatile cabana or studio with bathroom. The home is fresh and bright with a generous living and dining plus large family room. The bedrooms are all spacious providing excellent night-time comfort and the powder room and shower in the laundry is a real bonus when coming out from the pool. Superbly presented for immediate enjoyment with solar panels added, it sits footsteps to the bus, local shops, Brigidine College and Sydney Grammar School. Accommodation Features: * Bright refreshing interiors, expansive living room * Formal dining room, reverse cycle a/c, casual dining * Bi-fold doors open to the terrace, stylish modern kitchen * Gas cooktop, Smeg appliances and breakfast bench * Internal laundry with shower, adjoining powder room * Large upper level family room, balcony with green outlook * Four bedrooms with robes, large spa main bathroom * Internal access double lock up garage with storage * EV charger External Features: * Quiet tree-lined street, great community spirit * North facing on its substantial 980sqm block * Fenced and secure sprawling back lawns * Immense shade cloth covered entertainer's terrace * Lawn areas, designer solar heated pool, 9.13kw solar panels * Freestanding cabana/studio with bathroom and a/c at the rear Location Benefits: * 120m to the 195/6, 196 and 197 bus services to St Ives Shopping Village, St Ives North Public School, St Ives Showgrounds, Belrose, Mona Vale, Gordon station and Macquarie * 750m to Ku-ring-gai Wildflower Garden * 700m to the local shops and cafes * 750m to Hassall Park * 1.1km to Sydney Grammar * 1.3km to Brigidine College * St Ives High School and St Ives Park Public School catchments * Easy access to Masada College * Moments to the village shops and dining * Easy drive to Gordon Station Contact ☎ David Beveridge ☎ 0411 225 167 Disclaimer: All information contained here is gathered from sources we believe reliable. We have no reason to doubt its accuracy however we cannot guarantee it.