

12 Skyburnett Street, Reedy Creek, Qld 4227



House For Sale

Saturday, 13 January 2024

12 Skyburnett Street, Reedy Creek, Qld 4227

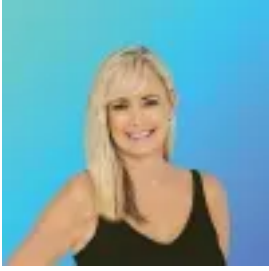
Bedrooms: 5

Bathrooms: 3

Parkings: 3

Area: 867 m2

Type: House



Tracy Tomars
0755930044

Auction

Auction Location: In Rooms - TAFE Robina Campus, The Anna Rose Room

Welcome to this elevated position with magnificent native bush backdrop set on one of The Observatory's premier cul-de-sac streets - a short drive to the white sands of BURLEIGH beach. This 5 bedroom, double storey home with modern interiors showcases all the features of quintessential resort style living...plus there's TRIPLE car garaging with added height in the 3rd garage to accommodate a caravan/boat or other off-road toys. The modern bespoke kitchen features waterfall edge stone bench tops, Bosch appliances, lux tap-ware and double sinks with uninterrupted views to the outdoors and pool area - there's a seamless flow from your dining and lounge areas out to the covered outdoor alfresco with huge BBQ, fridge facilities with hot and cold water on hand. The grassed outdoor area is generous in size for kids to play with freedom. The heated pool/spa and fire pit are perfect for entertaining large groups of friends and family. The quality of finishes in all bathrooms and ensuites may result in guests not wanting to leave. Downstairs guest area showcases privacy, space and functionality with a bespoke barn door entry to what can be utilised as either a teenage retreat or as dual living. The area encompasses a generous sized bedroom with lux ensuite and an additional living area with views through the plantation shutters. The location includes the convenience of a generous sized children's playground at the end of the street with a huge fully fenced dog park adjacent to it.

Main features; * Master bedroom with ducted air conditioning, private balcony, walk in robe, and a large lux ensuite with shower featuring black bespoke tap-ware, wall mounted vanity with his and hers designer sinks. * Three queen-sized bedrooms upstairs with plush carpet, ceiling fans, ducted air conditioning and inbuilt robes * Fourth bedroom downstairs has plush carpet, ceiling fan, built in robe plus its own ensuite and private adjoining living space with plantation shutters. * Designer kitchen upstairs features generous storage space and walk in pantry, waterfall edge stone bench tops and stone splash back, pendant lighting, Bosch appliances including oven and induction cooktop, bespoke tap-ware and deep double sinks * Open plan living upstairs with floating timber flooring, ducted air conditioning, ceiling fan and a seamless flow to your outdoor alfresco entertaining areas * Main bathroom with bathtub, shower and separate toilet situated in between the guest bedrooms. * All 3 bathrooms showcase floor to ceiling tiling with ambient strip backlighting to mirrors and vanity. * Gorgeous laundry room with stone bench tops, stone splash back and hidden appliance cupboard with external access * Fully covered alfresco with ceiling fan, in built cabinetry and stone bench top with double door fridge, hot & cold water taps and BBQ, overlooking your fire pit area and fully fenced back yard * Huge waterfall edge pool with stone tiles, spa tub, fully heated, plus sun deck to relax * Triple lock up garage with main double door showcasing epoxy flooring and generous under house storage * Plenty of storage * Solar electricity system * Large water tank for the low maintenance gardens plus irrigation system * Fully landscaped low maintenance gardens * Security screens, custom blinds and sheers throughout. * Smartphone controlled garden and rear deck lighting

Location * Close proximity to many of the Gold Coast's premier schools (details below) * Convenient lifestyle, this quiet family friendly location in The Observatory boasts beautiful breezes surrounded by natural reserves, endless unspoilt walking trails * The local children's playground is at the end of the street with a huge fully fenced Dog Park adjacent to it. * 4min drive to local Woolworths shopping centre, Medical Centres, BWS, Sushi Train, Hairdresser and Zarraffa's coffee house * Short drive to the iconic Burleigh Beach headland cafes and restaurants * The Glades Golf Course only 7km away * Only minutes to M1 motorway and Varsity trains station with an easy commute to Gold Coast airport

Schools & Daycare * Green Leaves Early Learning Centre - 2min drive * Papilio Early Learning - 3min drive * Kings Christian College - 4min drive * Hillcrest Christian College - 5min drive * Somerset College - 7min drive * All Saints Anglican School - 13min drive

Auction Venue: In Rooms - TAFE Robina Campus, The Anna Rose Room

Date: Wednesday, 31st January 2024

Time: 6:00pm with registrations from 5:15pm

Order of Sale: TBC closer to the date

Disclaimer: We have in preparing this information used our best endeavours to ensure that the information contained herein is true and accurate, but accept no responsibility and disclaim all liability in respect of any errors, omissions, inaccuracies or misstatements that may occur. Prospective purchasers should make their own enquiries to verify the information contained herein. * denotes approximate measurements.