

# 12 Slade Place, Prospect, NSW 2148



## Sold House

Friday, 27 October 2023

12 Slade Place, Prospect, NSW 2148

Bedrooms: 3

Bathrooms: 1

Parkings: 2

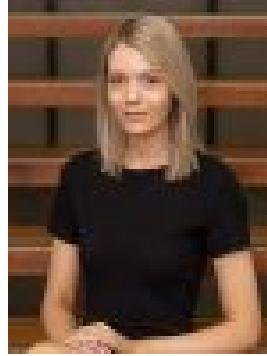
Area: 701 m<sup>2</sup>

Type: House



Mark Vella

0401060412



Jodie Feeney

**\$1,040,000**

Discover a captivating family sanctuary in Prospect's coveted neighbourhood. This brick veneer residence offers a canvas for your unique vision, nestled in a tranquil cul-de-sac amid stunning family homes, radiating an inviting and secure ambiance. The expansive 701m<sup>2</sup> (approx.) block is a rare find, perfect for those craving space and versatility. Your family home awaits – seize this opportunity today! The home offers:- 3 large bedrooms with built-in wardrobes- Generous formal living room- Separate family/dining space- Well appointed kitchen and bathroom- 14kw ducted air conditioning throughout home with WIFI compatibility - Detached double garage, perfect for handymen or enthusiasts- Large covered alfresco overlooking large, low-maintenance yard