

**12 Sunderland Drive, Raby, NSW 2566**



**Sold House**

Thursday, 29 February 2024

12 Sunderland Drive, Raby, NSW 2566

**Bedrooms: 3**

**Bathrooms: 1**

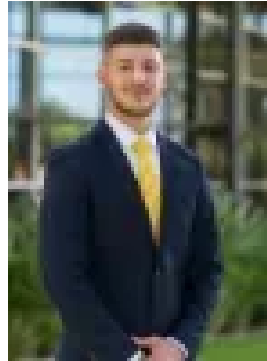
**Parkings: 1**

**Area: 560 m2**

**Type: House**



Shравan Shekhar  
0478163553



Ali Makhlouf  
0414500134

**\$840,000**

Shravan Shekhar and the team at Ray White Ingleburn are proud to present to the market 12 Sunderland Drive, Raby. Situated in a quiet street offering fantastic views of the local area, this three bedroom family home is a must to inspect. The home offers a spacious floor plan with neat and tidy interiors, a huge enclosed sunroom perfect for entertaining family and friends plus low maintenance front and back yards. A perfect opportunity for first home buyers looking to step into the market or your next investment with the home vacant and ready to be leased! Other features include: \* Three bedrooms with built in robes to all \* Spacious lounge and dining areas \* Neat and tidy kitchen with dishwasher and plenty of cupboard space \* Separate meals area \* Large main bathroom with separate toilet \* Split system air conditioning \* Internal laundry \* Huge enclosed sunroom with plenty of space for entertaining \* Low maintenance front and back yards with landscaped gardens \* Two Garden Sheds \* Rainwater Tank Access \* Single carport plus side access \* Situated on a 560sqm block of land. Leave the car at home you will be walking distance from the following local amenities; - 300m to Local Bus Stops - 300m to Raby Dog Park - 700m to Robert Townson Public School - 750m to Raby Sports Complex - 950m to Raby Shopping Centre - 1km to Raby Rose Hotel. And Driving distance from 1.5km to M5 Motorway entrance 2 km to Eagle Vale Market Place. Call Shravan today on 0478 163 553 now to discuss further or schedule an inspection!