

12 Tempe Street, Earlwood, NSW 2206

House For Sale

Wednesday, 7 February 2024

MONTANO
EST. 1960

12 Tempe Street, Earlwood, NSW 2206

Bedrooms: 4

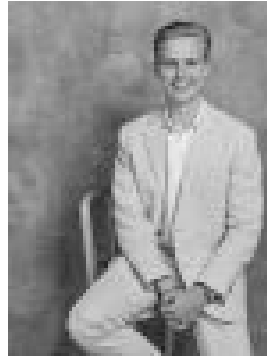
Bathrooms: 3

Parkings: 2

Type: House



Michael Montano



Jack Mullane
0468821004

Auction

Newly-built, state-of-the art, of unbeatable contemporary quality, and in a truly enviable parkland location on the border of Marrickville and Tempe - this is the family home you've been looking for. Constructed to the highest standards, this oversized 4-bedroom, 3 storey home, with an in-built lift and garaging, is unmatched when it comes to lifestyle flair, style, and liveability. The home is situated in a pristine, quiet locale with sweeping views of Waterworth Park and footsteps away to the Cooks River, but yet only minutes away Tempe Station, shops, cafes, and schools. Features:

- 4-bedrooms with built ins, master with ensuite.
- Spacious dual living and dining area that flows through to the kitchen and oversized terrace with park side views.
- Gourmet stone kitchen with integrated European fridge, dishwasher, gas oven + stove, and quality stone island-bench with adjoining stone dining table.
- Rear yard in addition to private lower-level internal courtyard enhancing functionality.
- Upstairs oversized entertainer's terrace with inbuilt BBQ.
- Garage with ample storage space and additional car space.
- Unique inbuilt lift that accesses all 3 levels of the home.
- Quality finishes throughout, with A/C + gas heating, engineered floorboards, sheer curtains, and abundance of natural light which cascades through multiple skylights.
- Smart home intercom system, double brick construction featuring Italian render feature.