

12 The Ridge, Canterbury, Vic 3126

KAY & BURTON

Sold House

Wednesday, 16 August 2023

12 The Ridge, Canterbury, Vic 3126

Bedrooms: 5

Bathrooms: 2

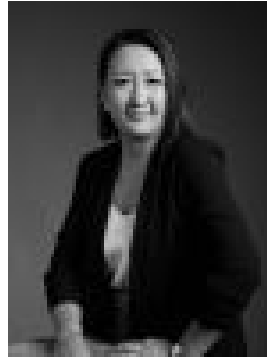
Parkings: 2

Area: 914 m²

Type: House



Walter Dodich
0413262655



Ericka Wong
0411472849

Contact agent

Occupying a vast allotment in an exclusive family enclave, this classic Californian presents an array of possibilities to enliven existing character or rebuild one or more luxury showpieces (STCA). Commandingly set behind manicured gardens, an inviting interior exudes old-world grace and grandeur, with an impressive entry showcasing leadlight windows, high ceilings, and intricate detail. Served by a pair of smart bathrooms, three generous lower bedrooms accompany a pair of upstairs guest rooms, while a spacious kitchen with walk-in pantry caters for garden-glimpsing formal living and dining areas. With an external store room and sizeable shed, a lush and private backyard provides ample kids' play space, while further highlights include split system heating and cooling, NBN, a full-size laundry, and wide driveway reaching a multi-car garage at rear. Surrounded by some of Melbourne's most significant homes and estates, it's steps from the blissful Boroondara Park and Anniversary Trail, along with city-bound trams, East Camberwell Station, Camberwell and Camberwell Girls' Grammar Schools, and famed Camberwell Junction shopping and dining. Land size: 914sqm (approx.) Frontage: 21.43m (approx.)