

12 Widden Close, Scone, NSW 2337

WARBURTON

Sold House

Friday, 3 May 2024

12 Widden Close, Scone, NSW 2337

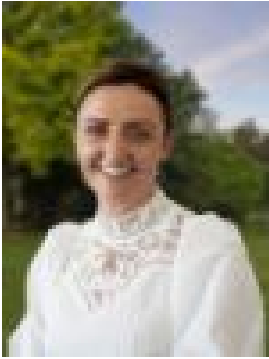
Bedrooms: 4

Bathrooms: 2

Parkings: 2

Area: 1749 m2

Type: House



Renee Hunt
0265452227



Sarah Lorden
0404478427

\$870,000

This home is a headliner! Brand new, brimming with fabulous inclusions and absolutely primed for family living, prepare to be utterly impressed by all on offer here: • Inviting and light filled entry foyer • Huge master bedroom with large dressing robe and beautiful ensuite bathroom with separate W.C • Split level design then steps down to space providing the fabulous family living options with soaring 3m ceilings • Home theatre room with French Doors for separation • High quality modern kitchen with 900mm appliances, superb separate butlers nook and large walk-in pantry • Velux skylight • Expansive open plan family space, comprising dining and living area • Further separate children's activity room • Three spacious bedrooms, all with built in robes and wiring for fan lights • Gorgeous main bathroom with separate W.C • Family-sized laundry with great storage space • Ducted air conditioning throughout • Wonderful undercover alfresco, positioned to enjoy the incredible views of the Valley beyond • Enormous 1,749sqm allotment, a blank canvas and awaiting the new owner to place their stamp on the property, with provisions already in place for a potential shed and swimming pool (STCA) • EV Charger in garage, which has internal access • 6.6kW solar panels Located at the end of a lovely, quiet culdesac, this is a home designed for family living and leaves an opportunity to create the outdoor oasis of your choosing!