

**12 Wilsons Lane, Exeter, NSW 2579**



**Sold House**

Thursday, 16 November 2023

12 Wilsons Lane, Exeter, NSW 2579

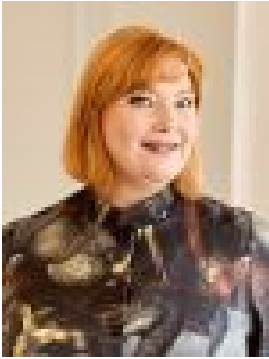
**Bedrooms: 5**

**Bathrooms: 3**

**Parkings: 2**

**Area: 1888 m2**

**Type: House**



Sarah Wotton  
0412338891



Katie Scanlan  
0414630310

**\$2,300,000**

The gentle stroll to the recently refurbished Exeter General store, north to rear aspect and stunning established gardens alone make this the quintessential piece of The Highlands. Add to this a renovation with renowned architect Coble Stephens which includes a gorgeous self-contained guest house, a work from home studio, new bathroom and rejuvenated floor plan and you have a winning combination! The floor plan is excellent-with a great separation of the main bedroom from the others -all meeting in the oversized fabulous living/dining area and the kitchen family room as desired. All rooms flow beautifully to the wisteria covered pergola and hardwood deck which in turn takes full advantage of the garden and gorgeous inground pool- with frameless glass fence- itself a visual delight! In close proximity to The Village green, tennis courts and the historic railway station this is a highly desirable offering in a typically tightly held enclave.- Reverse cycle air-conditioning throughout as well as a gas fireplace in living room- Kitchen has stone benchtops, a pantry, family room adjacent with built in joinery, Miele oven, gas cooktop, stainless steel rangehood, and dishwasher - Three subsidiary bedrooms at one end of house share a new bathroom and the laundry has also been renovated.- The pitched double carport has a storage room at its side and at its rear is the excellent new home office with superb storage, air conditioner, and pitched roof with drop-down storage area- Main bedroom has built- ins and an ensuite with frameless glass shower, heated towel rail, heat lamp and good storage. - Outdoor fire pit area adjoins pool & guest accommodation which has open plan area with kitchenette, bathroom, high ceilings, air conditioner and its own deck. - Travertine pavers in main entrance & surrounding the pool - Beautiful fully fenced gardens boast a seductive circular gravel driveway, double hedge with daffodil walk, and stunning specimen trees including maple, plum, magnolia, golden ash and wisteria, roses, and many other earthly delights. Some feature trees and garden is uplit. - Located only 15 mins drive from fabulous Moss Vale shopping precinct full of fabulous every day and designer shopping and eating. Suzie Anderson Interiors, Highlands Merchant, Made By Others, Bernie's Diner, The Mossy Store, amongst the many desirable places to be... and only a further 10 minutes from Bowral's renowned CBD - Elegant yet comfortable, spacious yet intimate, this home is one piece of Exeter you won't want to miss.