

12 Wolseley Close, Mont Albert, Vic 3127

Nelson Alexander

House For Rent

Friday, 19 April 2024

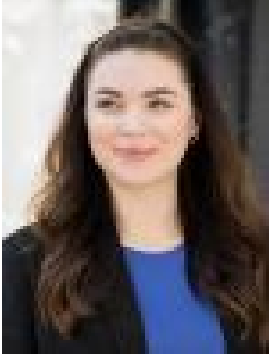
12 Wolseley Close, Mont Albert, Vic 3127

Bedrooms: 3

Bathrooms: 1

Parkings: 1

Type: House



Samantha Wise
0398548888



Eliza Bonnett
0398548888

\$650pw/\$2,824pcm

Conveniently located close to the train line, schools, and shops, this three-bedroom home has an abundance of features. With polished timber floorboards throughout, ornate ceilings, picture rails, ducted heating, the list continues; ornate fireplaces in both the living room and separate dining room, kitchen with stainless steel gas hotplates and electric wall oven, and dishwasher. The huge master bedroom is striking and with built-in robes is ideal. The second bedroom has built-in robes as well. Use the third bedroom or have it as a study. With an enormous paved area ideal for entertaining, bathroom with shower, vanity unit, and separate toilet. This property also contains a second toilet, beautiful enclosed garden surrounds (which are maintained during the tenancy). Enjoy the off-street parking and use the garage for storage.