

120-130 Embreys Road, The Bluff, Qld 4340



Sold House

Monday, 18 March 2024

120-130 Embreys Road, The Bluff, Qld 4340

Bedrooms: 2

Bathrooms: 2

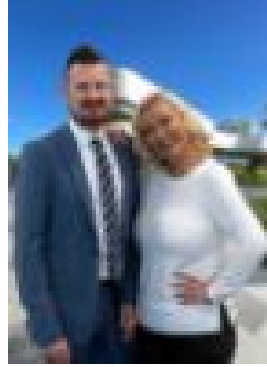
Parkings: 2

Area: 1 m2

Type: House



Glenn Ball
0499081445



Lisa Jensen
0499081445

\$770,000

• TRANQUIL RETREAT WITH BREATHTAKING VIEWS • 2 BEDROOMS WITH 2 BATHROOMS • TANDEM CARPORT UNDER HOUSE • BEAUTIFUL ESTABLISHED LAWNS AND GARDENS • 10,000M² LUSH BLOCK • OPEN PLAN KITCHEN, LOUNGE & DINING SPACE • 2 STOREY LIVING • BACK DECK OVERLOOKING THE VALLEY • LESS THAN 10 MINUTE DRIVE TO ROSEWOOD TOWNSHIP

Welcome to 120-130 Embreys Road, nestled in the serene enclave of The Bluff. This unique property offers a tranquil retreat, combining breathtaking views with ample space for creative living. Perched atop a hill, this residence commands panoramic views that will leave you in awe. Step through the inviting front entrance and into a cool, creatively designed space bathed in natural light. The ambience is both welcoming and inspiring, perfect for those seeking a peaceful haven to call home. As you explore further, you'll discover the heart of the home - a well-appointed kitchen complete with modern amenities including a dishwasher and pantry. The layout encourages effortless entertaining, with seamless flow from the kitchen to a spacious lounge/dining area that opens onto a back deck. Imagine hosting gatherings with family and friends against the backdrop of lush lawns, manicured gardens, and sweeping valley views. For sustainability-conscious homeowners, this property boasts 36 solar panels, providing eco-friendly energy solutions and reducing utility costs. Additionally, a large water tank ensures ample water supply for maintaining the beautiful lawns and gardens. The upper level of the home is dedicated to relaxation and rejuvenation, featuring a master bedroom with an ensuite bathroom as well as the second bedroom. Practicality meets convenience with a tandem carport located beneath the house, providing shelter for your vehicles and additional storage space. Set on a generous 10,000m² block, there's plenty of room to explore and customise to your liking. Whether you're a nature enthusiast, an avid gardener, or simply crave a peaceful retreat from the hustle and bustle of city life, this property offers endless possibilities. The location puts you within a 10 minute drive to Rosewood township which provides all the necessary amenities including shops, schools, doctors, parks as well as the Rosewood Train Station which can take you to Ipswich CBD or even further to Brisbane CBD. A similar distance in the other direction will put you on the Warrego Highway making your commute to Toowoomba or Brisbane seamless. Don't miss your chance to experience the serenity and charm of 120-130 Embreys Road. Contact the listing agents Glenn Ball and Lisa Jensen today to arrange a viewing and discover why this could be your dream home in The Bluff.

DISCLAIMER: First National Action Realty has taken all reasonable steps to ensure that the information contained in this advertisement is true and correct but accept no responsibility and disclaim all liability in respect to any errors, omissions, inaccuracies or misstatements contained. All distances, measurements and timeframes contained within this advertisement are approximate only. Prospective purchasers should make their own enquiries to verify the information contained in this advertisement.