

# 120/22-32 Great Western Highway, Parramatta, NSW 2150

## Unit For Sale

Tuesday, 13 February 2024

120/22-32 Great Western Highway, Parramatta, NSW 2150

**Bedrooms: 1**

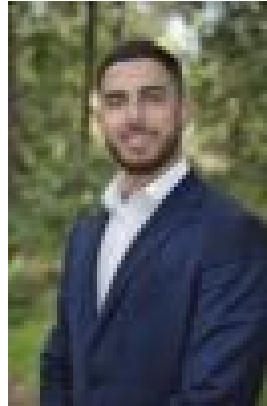
**Bathrooms: 1**

**Parkings: 1**

**Type: Unit**



Ray Fayad  
0296354000



Nabil Mouslemani  
0296354000

## **Just Listed**

Arguably one of Parramatta's most affordable properties. Studio apartment boasts exceptional views of Parramatta city skyline and just 650 metres from Parramatta Station and 200 metres from Westfield Parramatta. Positioned in the lively Parramatta CBD, it's an ideal entry-level investment that would generate a tidy rental income of \$420.00 per week. -Open plan-North facing balcony-Level 6-1 bathroom-1 car-space-Low strata levies