

120/23 Corunna Road, Stanmore, NSW 2048



Sold Apartment

Wednesday, 20 March 2024

120/23 Corunna Road, Stanmore, NSW 2048

Bedrooms: 2

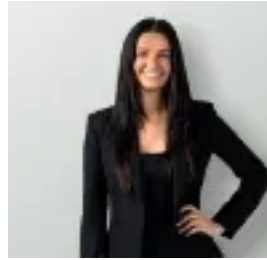
Bathrooms: 2

Parkings: 1

Type: Apartment



Blake Lowry
0478750750



Grace Valentine
0481117534

Contact agent

There's a great feeling of space and privacy that makes this generous-sized apartment a very cool urban home. It holds lots of appeal for buyers looking for a quality warehouse property with good proportions, modern finishes and a quiet corner position that's tucked away at the rear of the complex. As part of Stanmore's former chocolate factory building, this unique property enjoys a top location a short stroll to the train station and local cafes, with all of Newtown and Enmore's attractions close by.- A flowing single-level layout with a crisp and airy open design - Extra-high ceilings, polished timber flooring and modern decor- Two peaceful bedrooms, renovated bathrooms and built-in robes- A huge 25sqm secure car space with plenty of extra room for storage- Private balcony plus a quality gas kitchen with a stone breakfast bar- Set within a security building with well-maintained common areas- Walking distance to Annandale village shops and Stanmore station