

1205/12 Philip Avenue, Broadbeach, Qld 4218



Apartment For Sale

Thursday, 13 June 2024

1205/12 Philip Avenue, Broadbeach, Qld 4218

Bedrooms: 2

Bathrooms: 2

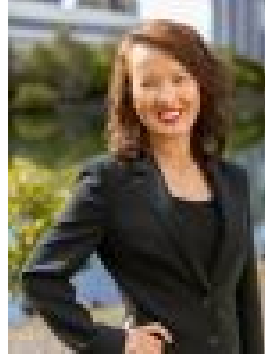
Parkings: 1

Area: 89 m2

Type: Apartment



Elly Malan
0403349979



Selina Feng
0425423518

Auction

Welcome to your new home at Signature, Broadbeach - where elegance meets convenience in the heart of the Gold Coast. This stunning 2 bedroom, 2 bathroom apartment offers a lifestyle of sophistication and comfort, surrounded by the best that the vibrant Broadbeach precinct has to offer. Key Features:

- Prime Location: Nestled in the prestigious Signature building, this apartment boasts a prime location just moments away from the golden sands of Broadbeach and the excitement of Oasis Shopping Centre.
- Panoramic Views: Enjoy breathtaking views of the Pacific Ocean and city skyline from the comfort of your own private balcony. The floor-to-ceiling windows flood the living spaces with natural light, creating an inviting and open atmosphere.
- Private Study Space: Enhance your productivity with a dedicated study nook, perfect for remote work or quiet study sessions. The thoughtful design of this space ensures that you can focus and accomplish tasks with ease.
- Contemporary Design: Step inside to discover a meticulously designed interior with high-end finishes and a modern aesthetic. The open-plan living and dining areas seamlessly connect, providing the perfect space for both entertaining and relaxation.
- Gourmet Kitchen: The stylish kitchen is equipped with state-of-the-art appliances, stone countertops, and ample storage space. Whether you're a culinary enthusiast or prefer casual dining, this kitchen is a chef's dream.
- Master Suite Retreat: The spacious master suite is a true retreat, featuring a private ensuite bathroom and generous wardrobe space. Wake up to the sound of waves with direct balcony access and indulge in the luxury of your own sanctuary.
- Resort-Style Amenities: Signature, Broadbeach offers a range of resort-style amenities, including a sparkling swimming pool, fitness center, and landscaped gardens. Experience the epitome of coastal living without leaving the comfort of your home.
- Secure Parking: Convenience is key, and with secure parking facilities, you can explore the surrounding areas or the nearby entertainment options worry-free. Indulge in the renowned Broadbeach lifestyle with world-class dining, entertainment, and shopping right at your doorstep. From the vibrant atmosphere of Oracle Boulevard to the pristine beaches just a short stroll away, this location offers the best of both worlds.

Points Of Interest

- Pacific Fair Shopping Centre 0.9km
- The Star Casino 0.8km
- Gold Coast Convention & Exhibition Centre 0.6km
- Oracle Boulevard Dining & Retail Precinct 0.25km
- Kurrawa Surf Club 0.35km
- Patrolled Beaches 500m
- G Link Light Rail 0.6km
- Broadbeach State School 0.65km

Signature Amenities

- 50m Infinity Edge Pool
- Expansive lush podium lawn
- Residents lounge
- Private Dining Room
- Gym, sauna, steam room & spa
- Theatre
- Teppanyaki grill
- BBQ area

Building Information

- Designed by Rothelowman with interiors by SJB Interiors, Signature is a new legacy development in Broadbeach
- ULTIQA Hotels & Resorts have been appointed as the onsite Manager of Signature Broadbeach.
- 35 levels
- Completed in 2022
- 250 apartments in total

We have in preparing this information used our best endeavours to ensure that the information contained herein is true and accurate, but accept no responsibility and disclaim all liability in respect of any errors, omissions, inaccuracies or misstatements that may occur. Prospective purchasers should make their own enquiries to verify the information contained herein. * denotes approximate measurements