

1205/605 St Kilda Road, Melbourne, Vic 3004



Sold Apartment

Friday, 18 August 2023

1205/605 St Kilda Road, Melbourne, Vic 3004

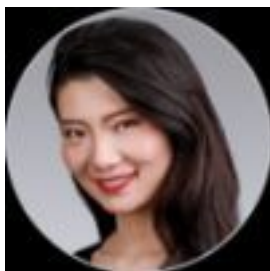
Bedrooms: 2

Bathrooms: 2

Parkings: 1

Area: 83 m2

Type: Apartment



April Du

Contact agent

DEVELOPER INCENTIVES AVAILABLE! 10% purchaser rebate + No FIRB fee. Limited time only. Featuring floor to ceiling windows this sophisticated 2 bedroom, 1 bathroom apartment features:

- Open plan living
- Built in work bench
- European kitchen appliances
- Timber floor boards throughout the living and dining area
- Carpeted bedrooms
- Light colour scheme

Surrounded by parks and gardens, the development is positioned on the corner of High Street and St Kilda Road, only 4km from the CBD. The location is regarded as one of Melbourne's major arteries flanked by parks and a mix of office and residential. It enjoys close proximity to Albert Park, Fawkner Park, Royal Botanical Garden, Wesley College, Mac. Robertson Girl's High, Chapel Street Shopping Precinct with various tram & bus routes in all directions. Residents will enjoy exclusive access to a private dining room, wine bar, sunken fireplace, reading room, health club, cinema and state-of-the-art gymnasium. Bookable spaces for entertaining include three private dining rooms with full kitchens as well as a karaoke pod. Amenities include:

- Views to Albert Park and Port Phillip Bay
- Lush, resort like outdoor pool and garden sanctuary
- Outdoor BBQ pods, lounges and bathing pavilions
- Gymnasium, heated spa and sauna
- Private Theatre
- Private dining and kitchen facilities

Inspections by Private Appointment. Please call 1300 859 711.