

1205 New Road, Orana, Clyde North, Vic 3978

House For Sale

Wednesday, 17 April 2024



1205 New Road, Orana, Clyde North, Vic 3978

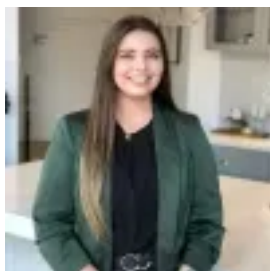
Bedrooms: 4

Bathrooms: 2

Parkings: 2

Area: 388 m2

Type: House



Olivia Turner
0397708806

\$880,00*

Build your own dream home from the ground up and have our experts guide you through every step of the way. For large families, you could do no better than the Lorne. Not only does this imaginative design offer as many as five bedrooms, but also three substantial living spaces to spread out in as well. With a separate study to work in, and a walk-in-pantry to surround yourself in, this design offers you all the space you could ask for. Architecturally inspired with an extensive range of standard inclusions and detailing, our Ascend homes are innovatively and beautifully designed to balance stylish practicality and spacious, luxury living. Create a home that's uniquely yours. ***Receive \$25k bonus value included for FREE*** - Timber Laminate Flooring- Stone throughout your home- Evaporative Cooling - Downlights throughout - Luxe Designer Kitchen and Bathroom Pack 36 - week build time guaranteed 12 - month maintenance period 25 - year structural guarantee 6 star energy rating guaranteed Luxurious Standard Inclusions... • 'Fisher & Paykel' stainless steel appliances (900mm) • 20mm stone bench tops in the Kitchen • Double Glazed windows to your whole home • LED Downlights to your main kitchen, meals and living spaces • Dulux wash and wear paint • Laminate overhead cupboards to Kitchen • Tiled shower bases to Bathroom and Ensuite • Towel rails, soap dishes & toilet roll holders to wet areas • Built in laundry laminate unit with inset trough • Quality floor coverings throughout (tiles and carpet) • Bristle Classic low-profile roof tiles • 'Colorbond' garage door and remote controls • Gas duct heating • Site cost allowance & Estate requirements Note - This is not an established home SCROLL DOWN TO ENQUIRE TODAY! WANT TO VIEW OUR HOMES? Call now to book an appointment! Homes on Display: Wave 22, Merbau 25, Norfolk 28, Portsea 28, Elwood 33, Jarrah 35 & Lorne 40. Open 11-5pm, 7 days a week. Beachwood Homes is a locally owned and operated builder operating since 1996. All these years of experience has contributed to our company being recognised and respected for our attention to quality and detail. With over 50 standard home designs, we have a design to suit everyone! *This is NOT an established home - dwelling is yet to be constructed. Beachwood Homes does not own this property - house and land sold separately. Price is based off our standard design & preferred siting. Images are indicative only & may nominate additional cost items. Beachwood Homes Pty. Ltd. Reserve the right to amend pricing, inclusions and promotions without notice