

121 Alcorn Street, Suffolk Park, NSW 2481

House For Sale

Thursday, 1 February 2024



121 Alcorn Street, Suffolk Park, NSW 2481

Bedrooms: 2

Bathrooms: 2

Parkings: 2

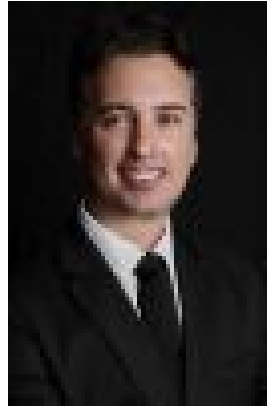
Area: 978 m2

Type: House



Kim Jones

0414629924



Rick Daniel

0401001515

Auction

Commanding one of the rarest oceanfront positions in the Byron region, this ideal quarter-acre block positioned at the preferred beginning of Alcorn Street - being closest to the shops, cafes, and vibrant nightlife - offers the ideal beachfront lifestyle with your own private beach-path access to pristine Tallow Beach. The beautifully renovated double brick mid-century home on an oversized block of 978 sqm is neighbour-free to the north side and situated in lush tropical gardens flowing through to the sand. This beach house presents a premium opportunity for investors, sea changers, those wanting to build their dream home or a turn-key superb holiday home.- Mid-century exquisitely renovated chic beach house with polished concrete floors- Open plan sunken lounge and dining with high ceilings throughout- Beautifully appointed brand-new renovated eat-in gas kitchen- New luxurious bathroom with separate rainfall shower and deep soaking bathtub - Two bedrooms, master with new ensuite and direct access to the courtyard- Rare offering with exclusive beach-frontage access neighbour-free north side, bordering verdant parklands- Two sun-drenched Merbau timber decks and a spacious separate courtyard for true indoor-outdoor living- Massive lawned front garden with plenty of scope to build forward in line with other houses in the street or go up a level (STCA)- Coveted position, 2-mins stroll to Suffolk's cafes, shops and buses and only a few minutes drive to the Byron centre or Broken HeadDisclaimer: All information contained herein is obtained from property owners or third-party sources which we believe are reliable. We have no reason to doubt its accuracy, however we cannot guarantee it. All interested person/s should rely on their own enquiries.