

**124 Stephen Road, Marrakai, NT 0822**

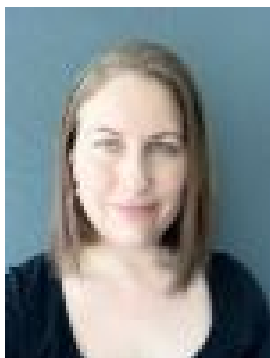
**Sold Residential Land**

Monday, 14 August 2023

124 Stephen Road, Marrakai, NT 0822

Area: 4 m2

Type: Residential Land



Nuriye Piening  
0429826650

**\$157,000**

Ever thought of owning a property that is easy maintenance, head out for a weekend fishing and camping? This property may be the one you have been looking for. 10 acres with power, shed, toilet and shower! set the tent up and you're off to catch a Barra or 2 at the famous Corroboree Billabong in less than a 20 mins drive. Call in and have a bite to eat at the Corroboree Park Tavern which is only 3mins from the property. Or just love a bush block and you want to be away from the hustle and bustle and build your dream home? \* 10 acres\* Bore water, great bore surrounding the property from 2lps to 10lps\* 3 phase power to the property, single phase to bore and ablution block\* Caravan shell great for home project\* Shelter\* Shed with ablution \* Partly fencedProperty is sold 'as is where is' There's a Drainage Easement on the left hand side of the property approx 10mtrs wide and runs along the boundary to the back.\* Approx 3 min to Corroboree Park Tavern\* Approx 44 minutes from Coolalinga Central where you will find the major retailers, food shops, local markets and Tavern to enjoy lunch or dinner. \* Approx 35 minutes from Humpty Doo Village\* Bus routes for school pick up and drop off to the rural primary and middle schools. \* Spend your weekends camping and fishing\* Local attractions close by