

**126/402-420 Pacific Highway, Crows Nest, NSW
2065**



Apartment For Rent

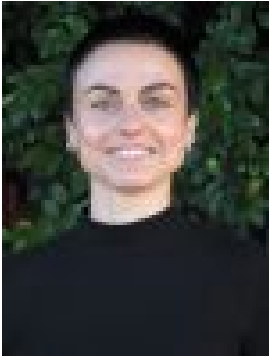
Wednesday, 15 May 2024

126/402-420 Pacific Highway, Crows Nest, NSW 2065

Bedrooms: 1

Bathrooms: 1

Type: Apartment



Martyna Majno
0438544328

\$500 per week

With respect to the government's easing of restrictions around open homes but in a continuing effort to help stop the spread of COVID-19, we will conduct our scheduled open homes with social distancing and hygiene protocols in place. Our preference is to continue to offer private appointments however public inspections will be available for some properties. Please contact the listing agent for more information. Located in the sought after Atrium building, this north facing one bedroom apartment is ideally located within a short stroll to city transport links as well as Willoughby Road's vibrant cafes and eateries. - Abundant natural light - Floorboards throughout - Combined living and dining flows to sunny balcony - Bedroom with mirrored built-in wardrobe - Modern white tiled bathroom with separate bath tub - Internal laundry with washing machine and dryer - Gas kitchen with ample storage and fridge included - Security building includes pool, gym, spa and sauna - Rooftop terrace - Close to all transport, shops and cafes - Located within close proximity to St Leonards train station and Woolworths supermarket, plus within walking distance to a cluster of Crows Nest's finest restaurants and cafes. Available now