

126/9 Gladstone Way, Edgeworth, NSW 2285



House For Sale

Monday, 8 April 2024

126/9 Gladstone Way, Edgeworth, NSW 2285

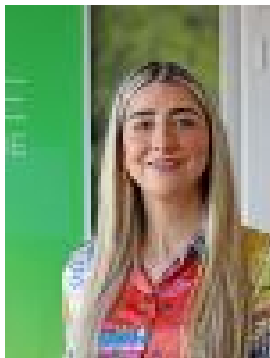
Bedrooms: 4

Bathrooms: 3

Parkings: 2

Area: 450 m2

Type: House



Cameron Grove Sales
0436910290

CONTACT AGENT

This RIBA Home occupy a prominent site in the heart of Cameron Grove Estate and provide the perfect base for today's modern resident. A large 450m² block accommodates a 4-bedroom home that has been designed for a large or growing family. Large open plan living areas, upstairs media/teenagers retreat, outdoor alfresco & kitchen with a butler's pantry. This selection by RIBA Homes offers high quality, modern homes with comfortable layouts and carefully considered living spaces. Don't miss out on this one-of-a-kind opportunity, this home is currently under construction forecasting to be complete in 2nd quarter 2024. Its only \$1,000 to secure this property and a further 10% on exchange... no progress payments with the balance payable on completion of the home!

Property Highlights

- Bespoke Kitchen Additions
- Smart stone benchtop
- Wall mounted cupboards
- Soft-close drawers and cupboards
- Stainless steel appliances
- Dishwasher
- Bespoke Bathroom Additions
- Full height tiling to shower enclosure
- Shower niche
- Designer floating vanities with mirror and Smart stone benchtop
- Other Bespoke Additions
- Ducted Air conditioning system
- Landscaped rear and front yard
- Colorbond fencing included
- 1,200mm feature entry door
- Tiled outdoor living area
- Hybrid Flooring to Living areas and carpet in bedrooms

NBN Location

An ideal location to raise a family, Cameron Grove Estate offers not only luxurious modern homes but access to an easy, well-connected lifestyle. Within just a ten-minute drive, residents are connected to no less than 12 schools, including Edgeworth Heights and West Wallsend High School. School-age kids also enjoy an abundance of play areas nearby, including playgrounds, outdoor gyms, nature reserves and picnic areas, sport fields and running tracks, netball courts and even a skate park. For parents, a shopping centre, cafés and Woolworths, Harrigan's Irish Pub already under construction directly within Cameron Grove Estate. Woolworths has already opened for business; this home is situated just a 30-minute drive from Newcastle and a five-minute drive from the Hunter Expressway, plus enjoying close connections to major commuting routes within a ten-minute drive. Don't miss this opportunity! Call Meg today on 0436 910 290.