

126 Fields Street, Aintree, Vic 3336



House For Sale

Saturday, 13 April 2024

126 Fields Street, Aintree, Vic 3336

Bedrooms: 5

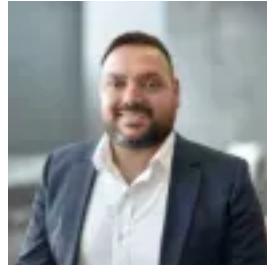
Bathrooms: 3

Parkings: 2

Type: House



Raj Bakshi
0403491845



Prem Walia
0403491845

TUESDAY 6.15PM & THURS 6PM OPEN, PRIVATE SALE

(5 Bedrooms including one Master downstairs, 3 Showers, Formal lounge/Home office, Upstairs Living, Walk in 2 pantries, Alfresco with decking and a premium location) Just 5-minutes walk to Woodlea shopping centre and prestigious Bacchus Marsh Grammar School, this large family home is one of its kind. Defined by contemporary elegance with spectacular architecture showcases lavish proportions, opulent finishes and sunlit interiors. Impeccably offering: **DOWNSTAIRS-** • Commanding & imposing elevated position, expansive exposed aggregate concreting and professionally maintained front garden welcome you. • Wide timber door, top grade flooring introduces a lavish home. • One Master bedroom with walk in robe with extra shelving, en-suite with floor to wall tiles is ideal for two families living together or for visiting guests/parents. • Formal lounge or home office at the front. • A stunning and well-appointed kitchen with 40mm waterfall premium stone island bench top, large L shaped stone benchtop with two glass windows, 900mm Fisher & Paykel gas cook top, dishwasher, double under mount sinks, over head cabinets, soft close cabinetry & large fridge space will delight the chef-de-cuisine. • Spacious two walk-in pantries is a great bonus. • Large family can dine together with comfort at this massive meal zone under the massive void. • Spacious and sun-kissed living arena is a delight to the eyes. • Sliding door leads to alfresco with decking is a great bonanza for your family's indoor and outdoor entertainment. • Professionally landscaped with artificial grass on this low maintenance backyard. • Powder room as a guest toilet. • Spacious laundry with heaps of storage. • Double car garage with internal access. **UPSTAIRS-** • Main Master bedroom at the front, massive walk-in robes, double vanity en-suite with designer wall tiles, stone bench top and large shower with 2 shower heads. • 3rd, 4th & 5th bedrooms bedrooms, all with spacious built in robe and quality carpet. • Family retreat or 3rd living area proves a great floor plan this Nestle offers • 3rd bathroom to cater the rear rooms. **SPECIAL INCLUSIONS ARE:** • 6.6KW solar panel system for minimal electricity cost. • 6 CCTV camera system for your family's safety. • Zoned security system. • Double glazed windows, noise cancellation insulation. • Video intercom. • Double blinds and quality sheers. • LED lights, freshly painted, Roof eaves through out, Pendant lights and much more. Close proximity to Woodlea town centre, state and Grammar school, public transport, Taylors road make this home a much desirable address. With all the boxes ticked, be sure to get your wish fulfilled by inspecting early! Please call Raj Bakshi or Premjit Singh Walia for your ANYTIME private inspection today! Every care has been taken to verify the accuracy of the details in this advertisement, however we cannot guarantee its correctness. Prospective purchasers are requested to take such action as is necessary, to satisfy themselves of any pertinent matters.