

127/7 Gladstone Way, Edgeworth, NSW 2285



House For Sale

Friday, 3 May 2024

127/7 Gladstone Way, Edgeworth, NSW 2285

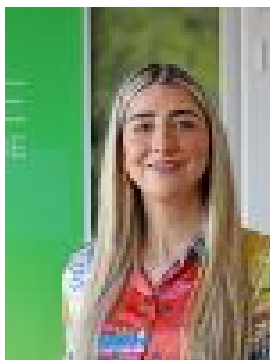
Bedrooms: 4

Bathrooms: 3

Parkings: 2

Area: 450 m2

Type: House



Cameron Grove Sales
0436910290

CONTACT AGENT

This is the perfect moment to secure your BRAND NEW TURN-KEY Two Storey Home by awarding winning RIBA homes. This Riba Home features 4 spacious bedrooms, 3 bathrooms (including a bathtub), 2 living areas, a rumpus/retreat, butler's pantry and a double garage on a land size of 450sqm. This thoughtfully designed all-inclusive house and land package offers high quality fixtures and finishes with nothing left to do but enjoy the lifestyle offered at Cameron Grove Estate. Due for completion mid-2024! Secure now and move in within months with no progress payments throughout the build.

Property Highlights: Kitchen Additions Smart stone benchtop Wall mounted cupboards Soft-close drawers and cupboards Fisher & Paykel Gas Stove Fisher & Paykel Dishwasher Bathroom Additions Full height tiling to bathrooms Shower niche Designer floating vanities with mirror and Stone benchtops Other Additions Ducted Air conditioning system Landscaped rear and front yard Colorbond fencing Tiled outdoor living area Hybrid Flooring to Living areas and carpet in bedrooms

NBN Location An ideal location to raise a family, Cameron Grove Estate offers not only luxurious modern homes but access to an easy, well-connected lifestyle. Within just a ten-minute drive, residents are connected to no less than 12 schools, including Edgeworth Heights and West Wallsend High School. School-age kids also enjoy an abundance of play areas nearby, including playgrounds, outdoor gyms, nature reserves and picnic areas, sport fields and running tracks, netball courts and even a skate park. For parents, a shopping centre, cafés and Woolworths, Harrigan's Irish Pub in Cameron Park. This home is situated just a 30-minute drive from Newcastle and a five-minute drive from the Hunter Expressway, offering close connections to major commuting routes.