

128 Glebe Road, Booval, Qld 4304

Sold House

Saturday, 11 November 2023



128 Glebe Road, Booval, Qld 4304

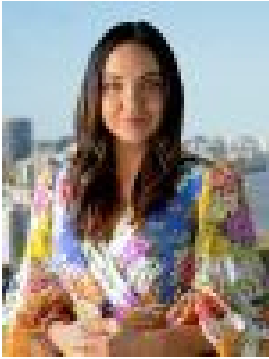
Bedrooms: 3

Bathrooms: 1

Parkings: 1

Area: 622 m2

Type: House



Laney McQueen

\$532,000

Step into a timeless world of elegance and modern convenience with this remarkable character home in one of Ipswich's most desirable locations. Striking street presence, established trees, and tranquil gardens invite you to this gorgeous home, just a stone's throw from all the amenities you could possibly need. This home would be perfect for first homeowners looking to get into the market at an affordable price, downsizers looking for a quality home in a quality location, anyone looking to renovate and flip the home for a profit and everyone else in between! Features: Spacious kitchen/dining/lounge areas with charming finishes Good-sized bathroom Third bedroom or additional living area Internal laundry Additional toilet Large covered entertaining area Fully fenced 662m² block with beautifully maintained gardens Conveniently located, this property offers easy access to the Ipswich CBD, schools, public transport, and shops, striking a perfect balance between peace and convenience. This property also presents a fantastic investment opportunity with great potential for rental returns. Recent rent appraisal was \$430 to \$450 p/w. Ipswich City Council rates: \$424.60 per quarter (subject to change) Don't miss out on this amazing opportunity! For more information or to arrange a viewing, please contact Laney McQueen. Disclaimer: NGU Real Estate Ipswich has taken all reasonable steps to ensure that the information in this advertisement is true and correct but accept no responsibility and disclaim all liability in respect to any errors, omissions, inaccuracies or misstatements contained. Prospective purchasers should make their own inquiries to verify the information contained in this advertisement.