

1280D Broadford-Glenaroua Road, Glenaroua, Vic 3764



Sold Residential Land

Monday, 28 August 2023

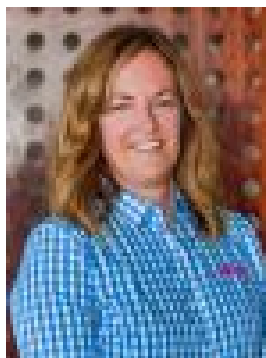
1280D Broadford-Glenaroua Road, Glenaroua, Vic 3764

Area: 40 m2

Type: Residential Land



Peter Hess
0413003140



Vanessa Hess
0413003140

\$860,000

Looking for the perfect rural block ? This has to be one of those. Gentle slopes, over 40 hectares, 13 minutes from Broadford, or 20 minutes from Kilmore and has excellent main road access. Ideal for a great homestead, potentially for an equine property, or for livestock. STCA Create your dream rural oasis. Zoned farming with no planning overlays, this really is a great opportunity.