

13/127 Riversdale Road, Hawthorn, Vic 3122



Apartment For Sale

Saturday, 3 February 2024

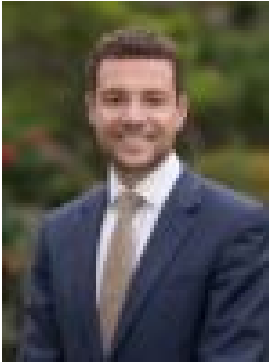
13/127 Riversdale Road, Hawthorn, Vic 3122

Bedrooms: 1

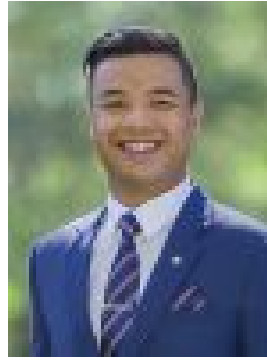
Bathrooms: 1

Parkings: 1

Type: Apartment



James Fitzpatrick
0398105000



Khom Falla
0398105000

Contact Agent

The best of a vibrant Hawthorn village life is right at your doorstep. Complete with a car park, this light filled apartment is conveniently located on the Riversdale Road tram line and is a short walk from both the Glenferrie and Auburn Rd train stations. With local boutiques, restaurants, gardens, Swinburne University and great coffee all within walking distance, this apartment boasts a peaceful treescape outlook over Hawthorn. This low-maintenance inner city-pad is a savvy investment or quality 1st home owner opportunity - 1 large bedroom, split system, smart modern kitchen, bright living and dining, large bathroom/laundry and north facing balcony. A golden opportunity right amidst the action.