

13 & 13a Ben Lomond Street, Bossley Park, NSW 2176



Sold House

Tuesday, 17 October 2023

13 & 13a Ben Lomond Street, Bossley Park, NSW 2176

Bedrooms: 5

Bathrooms: 2

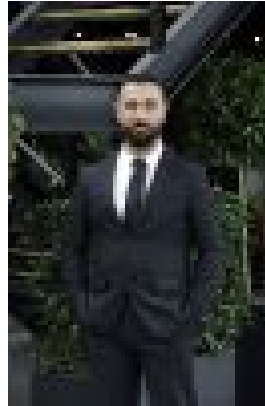
Parkings: 2

Area: 828 m2

Type: House



Aleksandar Stanojevic
0404744511



Ibrahim Kacho
0451906690

Contact agent

Are you seeking a spacious abode in the desirable neighborhood of Bossley Park? What about one currently with a dual income? Look no further! We present to you a stunning four-bedroom single-level home with an additional granny flat, nestled in one of the most coveted streets in the area. Situated in a fantastic street of Bossley Park, this property offers a peaceful and family-friendly environment. With generous proportions, the layout provides ample room for relaxation, entertainment, and quality family time. The private drive way allows for multiple cars to be parked off the street and gives the property a tucked away and private feel, close the gate and be secure, enjoying total privacy in your home. Enhancing the property's versatility, the granny flat provides a separate and self-contained living space. Ideal for extended family members, guests, or as a rental property, it boasts a private entrance, bedroom, bathroom, and kitchen. Don't miss this incredible opportunity to own a magnificent four-bedroom single-level home with a granny flat in the sought-after streets of Bossley Park. Experience a lifestyle of convenience and comfort. Within minutes to Stocklands Wetherill Park, Marconi Club, Bossley Park High School and other local amenities. Featuring: House * Four bedrooms, built in wardrobes * Expansive layout offering living and dining spaces* Air conditioning * Outdoor entertaining alfresco* Large front porch* Private Security Gate* 828 sqm block of land * Double carport with space for multiple parking on drive way* Within minutes to Stocklands Wetherill Park, Marconi Club, Bossley Park High School and other local amenitiesGranny flat * Bedroom, built in wardrobe * Living and dining spaces * Private entrance * Large backyard* Front porch