

13-15 Jessica Close, Wantirna South, Vic 3152



House For Sale

Friday, 27 October 2023

13-15 Jessica Close, Wantirna South, Vic 3152

Bedrooms: 5

Bathrooms: 5

Parkings: 2

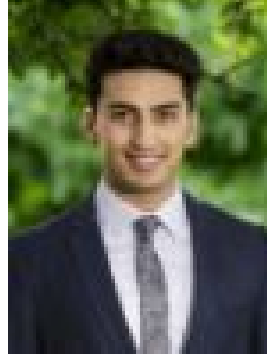
Area: 1793 m2

Type: House



Vivian Li

0398002222



Amir Hashemi

0412008721

Auction

THE PROPERTYWith a striking porte-cochere re entry and a stunning 1,793sqm (approx.) allotment adorned with a swimming pool, tennis court, exquisite alfresco, and double garage with workshop, this immaculate property makes a lasting impression. Designed to be a self-contained oasis for one fortunate family, this property promises to exceed expectations. The perfect blend of grandeur, warmth, and versatility are the keys to this home's success. The showcase interior boasts formal and informal living areas with cosy fires, a chefs' kitchen with granite benchtops and high-end appliances including wall oven, a bonus rumpus room, and bedrooms and bathrooms on both levels. With further highlights including a spa bathroom with sauna, adaptable artists' studio, home office, and gym, this property is perfect for those who want it all. On the upper bedroom level, bathrooms are available to each bedroom and the main bedroom is enriched with a walk-in robe and glass-wrapped ensuite that soaks up the lush outlooks. This one-of-a-kind designer residence in this lovely location has all the ingredients of a forever family home. Plan your viewing today.

THE FEATURES1,793sqm (approx.) property with swimming pool and tennis court Grand residence with landscaped gardens and porte-cochere re entry Formal and informal living and dining zones plus a rumpus room Versatile artists' studio, home office, and gym plus sauna and spa Spacious ground floor bedroom and second bathroom Upper level bedrooms with Jack-and-Jill bathroom, one with private bathroom, and main bedroom with walk-in robe and dual sink and tub ensuite Double garage with workshop and in-house access Coffered ceilings and strategically placed skylights for rich natural light

THE LOCATIONThis luxury residence also secures a lifestyle location within easy reach of conveniences. Situated near Eastlink, Eastlink Trail, Westfield Knox, public transport, and Koomba Park makes this the ideal position for family living. Add to this zoning for Wantirna Primary School and Wantirna College while in proximity of The Knox School, St Andrew's Christian College, and Waverley Christian College, the educational options are abundant.

On Site Auction
Saturday 18th of November at 4pm