

**13/155 Missenden Road, Newtown, NSW 2042**

**Lofitis.**

**Apartment For Sale**

Friday, 3 November 2023

13/155 Missenden Road, Newtown, NSW 2042

**Bedrooms: 2**

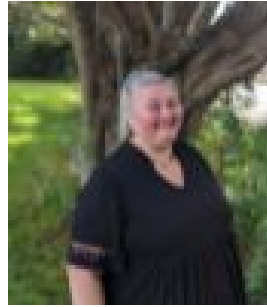
**Bathrooms: 1**

**Parkings: 1**

**Type: Apartment**



Angelo Lofitis



Mia Meadows  
0405666605

## Price guide \$860,000

Welcome 13/155 Missenden Road - A comfortable and quiet sanctuary tucked away in the cultural epicentre of Newtown. Experience the serenity, convenience and security of this delightful apartment, located in one of the inner-west's most thriving areas. As you step inside, you're greeted with a large living area that flows effortlessly out to a balcony with leafy views. Pull up a stool on the breakfast bar and enjoy cosy morning catch-ups with a poolside view. The practical and well-designed layout still offers plenty of hidey-holes offering distinct separation between the bedrooms, separate toilet and bathing area and plenty of storage. Outside the property is a true urban oasis. Indulge in all the delights that Newton has to offer. Some of Sydney's trendiest bars, cafes, restaurants and music venues. Conveniently situated just moments away from the Dendy Cinemas, RPA, Sydney Uni, The Seymour Centre and bus routes to the CBD. This truly is a serene environment where one can find plenty of space to unwind. So, sit back and savour your endless holiday in the city. Features: \*Resort-style living with pool & gym\* Reverse cycle air Conditioning\* Gas cooking\* Modern kitchen appliances \*Gym\* Swimming pool\* Separate bath & toilet\* Internal laundry\* Designated car space\* Plenty of visitor parking\* Positioned at rear of a popular security complex Location Features: \* 4 min walk to Royal Prince Alfred Hospital\* 5 min walk to University of Sydney\* 5 min walk Camperdown Memorial Rest Park\* 2 min walk to bus stop\* Local shops and amenities located downstairs Outgoings: \* Strata levies: \$1,824 per quarter approx.\* Council rates: \$249.50 per quarter approx.\* Water rates: \$192 per quarter approx.