

13/2 Cherry Street, Warrawee, NSW 2074



Sold Apartment

Wednesday, 27 December 2023

13/2 Cherry Street, Warrawee, NSW 2074

Bedrooms: 3

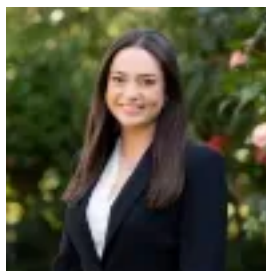
Bathrooms: 2

Parkings: 2

Type: Apartment



Domenic Maxwell
0294897474



Claudia Gomez
0272270030

\$1,365,000

This exceptional apartment rests within the gorgeous garden setting of the always in demand 'St Ermiens'. The captivating residence enjoys an easily accessible elevated ground floor position and a sprawling over-sized floorplan that guarantees comfort. Brimming with charm and appeal, the flow through design ensures it's fresh and airy, with rooms opening out to three balconies positioned on two sides. The solid brick and concrete beauty enjoys high ceilings, an expansive living and dining, a stone kitchen and stylish renovated contemporary bathrooms including an ensuite. It comes with a double lock up garage and remarkable convenience a level stroll to Coles, village shops and dining, the station, Warrawee Public School, Turramurra Memorial Park and Knox Grammar.

Accommodation Features:

- * Quality built full brick and concrete block, high ceilings
- * Entry vestibule with cloak storage, reverse cycle a/c
- * Spacious, well-designed, large L shaped living and dining
- * French doors to the alfresco balcony with a garden outlook
- * Stone kitchen, three generous bedrooms all with BIRS
- * Two bedrooms open out to their own individual balconies
- * Master with a wall of robes, garden outlook and chic ensuite
- * Renovated stylish bathrooms, main with a tub, laundry

External Features:

- * Serene setting amongst beautifully manicured greenery
- * Quality security building with intercom access
- * Generous alfresco balcony overlooks the gardens
- * Two balconies at the rear, easy access double lock up garage
- * Apartment of classic charm, enduring quality and grace

Location Benefits:

- * 80m to the 573 bus services to Turramurra, Sydney Adventist Hospital and Wahroonga Adventist School
- * Level walk to amenities
- * 350m to local shops including Coles
- * 350m to IGA and Turramurra Plaza
- * 500m to Turramurra station and the village
- * 750m to Warrawee Public School
- * 1km to Turramurra Memorial Park
- * 1.4km to Knox Grammar

Contact [Domenic Maxwell](mailto:Domenic.Maxwell@0434.537.577) 0434 537 577

Disclaimer: All information contained here is gathered from sources we believe reliable. We have no reason to doubt its accuracy, however we cannot guarantee it.