

13/35-43 Penelope Lucas Lane, Rosehill, NSW 2142



Unit For Rent

Friday, 17 May 2024

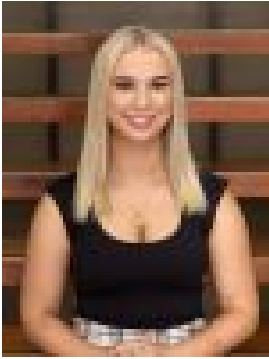
13/35-43 Penelope Lucas Lane, Rosehill, NSW 2142

Bedrooms: 2

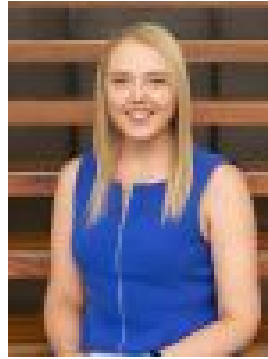
Bathrooms: 1

Parkings: 1

Type: Unit



Brielle Parkinson
0418420268



Katrina Ellis
0448545524

\$580.00 per week

* Ground floor* Freshly painted 2-bedroom unit* Both bedrooms with private balcony* Great size combined living and dining area* Kitchen with electric stovetop and dishwasher * Internal laundry* Air conditioning to main bedroom and lounge room* Private courtyard* Allocated car space with storage cage* Secure block with intercom* Short drive to Rosehill Public School and Harris park station* Easy access to shops, restaurants, James Ruse Drive and M4.