

13/889 Pacific Highway, Lisarow, NSW 2250

STONE

Townhouse For Sale

Friday, 5 April 2024

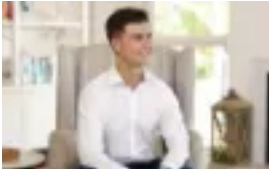
13/889 Pacific Highway, Lisarow, NSW 2250

Bedrooms: 3

Bathrooms: 2

Parkings: 1

Type: Townhouse



Zen Frediani
0243696000



Christel Renton
0243696000

Contact agent

Tucked away in one of the most convenient locations Lisarow has to offer is 13/889 Pacific Highway, a spacious and well thought-out 3 bedroom, 2 bathroom townhouse, featuring an open plan layout that flows effortlessly into your own private outdoor entertaining area, perfect for those who love to entertain! Enjoy the ease of a convenient & low-maintenance lifestyle without compromising on space, featuring a massive master suite and 2 additional spacious bedrooms all complete with built-in robes. Are you a keen investor? Looking for your first home? Thinking of downsizing? This could be the one for you! Features include:-- Just a short stroll from Lisarow shopping centre, bus stops and train station- Low maintenance & convenient living- 3 generously sized rooms all with built-in robes- Huge master bedroom, complete with en-suite- Open plan layout- Light-filled interior- Single lock up garage with internal access- Private courtyard with deck- Split system air conditioning- Perfect for first-home buyers, downsizers, investors, and young families!