

13 Amber Avenue, Fletcher, NSW, 2287



Sold House

Sunday, 16 April 2023

13 Amber Avenue, Fletcher, NSW, 2287

Bedrooms: 4

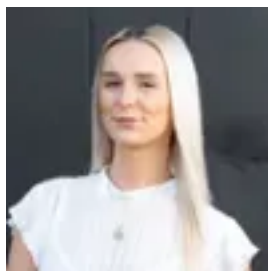
Bathrooms: 2

Parkings: 3

Type: House



Brad Wallace
0249492300



Tahnee Burke

Family Sanctuary In Quiet Cul-De-Sac

The spacious master suite sits privately at the front of the home. The modern ensuite and walk-in wardrobe sit out of sight behind the doorway for a seamless finish. The remaining bedrooms sit along the north side of the house, all featuring built in wardrobes and ceiling fans. The main bathroom boasting a large vanity with mirrored cabinet, freestanding bath and modern shower with frameless screen. The laundry promotes modern features including including a large laminate benchtop, sink and ample storage space.

The formal living located at the front of the home is a great retreat for the parents to relax while the open plan kitchen, dining and living is the ultimate space for entertaining. This impressive kitchen features a large gas cooktop, oven with separate grill, large double sink, walk-in pantry and dishwasher. Living and dining rooms are flooded by natural light creating a warm homely feeling.

The outdoor alfresco space is the ideal area for the summertime. The colourbond roof protects the space from the sun while the pool cools you down from the heat! The grassed yard wraps around to both sides of the property, one side with a gate for side entry and the other with a clothesline, garden and garden shed. A triple garage with drive through access ticks all of those final boxes!

- Private master suite with ensuite and walk-in wardrobe
- 4 Remaining rooms with built-in robes and ceiling fans
- Main bathroom with large vanity, freestanding bath and frameless shower
- Laundry with ample storage space, sink and large benchtop
- Impressive kitchen with gas cooktop, double sink, walk-in pantry and dishwasher
- Separate formal living and open plan kitchen/living/dining
- Undercover outdoor alfresco
- 6.5 x 3.3 Inground Pool
- Grassed yard with side gate access, garden, clothesline and garden shed
- Triple car garage with drive through access
- 723sqm Block in superb cul-de-sac location
- Close proximity to Fletcher Village Shopping Centre, Aldi Fletcher, Maryland Shopping Centre and Wallsend Village Shopping Centre
- Numerous schools in the area including Bishop Tyrrell Anglican College, Glendore Public School, Maryland Public School, Callaghan College Wallsend, Plattsburg Public School and St Patricks Primary School.

Secure a great new beginning for your family. Contact us today!

Brad Wallace - 0422 844 893, Tahnee Burke - 0432 333 753.