

**13 Benaud Street, Charlestown, NSW 2290**

**House For Sale**

Saturday, 24 February 2024

13 Benaud Street, Charlestown, NSW 2290

**Bedrooms: 5**

**Bathrooms: 3**

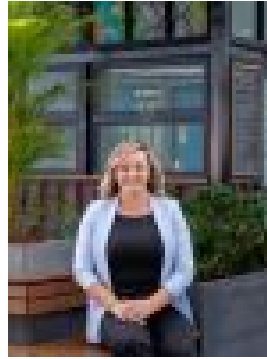
**Parkings: 2**

**Area: 607 m2**

**Type: House**



Peter Shiels  
0422479552



Natalie Francis  
0423606510

## Contact Agent

This solid two-story brick home presents an unparalleled opportunity for those seeking spaciousness and tranquility. Boasting five bedrooms, it effortlessly accommodates the dynamics of modern family life while ensuring each member finds their own private retreat. The allure of this residence extends beyond its walls, as it backs onto a lush bush reserve, providing a sense of seclusion and connection to nature rarely found in suburban settings. Convenience meets comfort with this home's prime location, mere moments away from Charlestown Square and Kotara Westfield's bustling retail and entertainment precincts. Whether it's a leisurely stroll through the nearby parklands or a shopping spree at the array of stores, this property offers the perfect balance of relaxation and excitement. Property Highlights;- 5 bedrooms, 3 living areas, and outdoor entertaining - Two-story solid brick in quiet cul-de-sac- Approx. 600 m2 flat block- Open plan airy sunlight top level that opens out onto the nature reserve - Modern kitchen with electric appliances that overlooks dining and living area- Ducted air conditioning on top level- Reverse cycle air conditioning unit and a fireplace in the lounge area- Large robes in all upstairs beds and ceiling fans in beds 1 and 2 - Master bedroom offers a private ensuite with shower and w/c- Main bathroom boasts floor-to-ceiling tiles, bath, shower and separate w/c- Multiple undercover entertaining areas front and back of the home- Double car garage with house access- Laundry and separate w/c on the ground floor- Ample storage available within the home, including a Workshop/storage area and under-stair storage in the garage - Well-maintained, low-maintenance lawns and gardens- Fully fenced backyard- A short 1.2 km to the general buzz of Charlestown Square and 4.2 km to Kotara Westfields where cafes, boutique shopping, and everyday needs are met