

13 Chelmsford Avenue, Blackheath, NSW 2785



Sold House

Tuesday, 7 May 2024

13 Chelmsford Avenue, Blackheath, NSW 2785

Bedrooms: 3

Bathrooms: 1

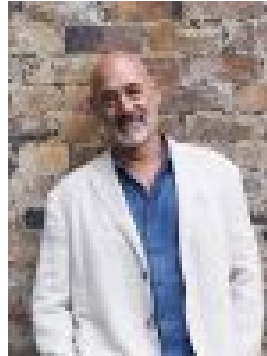
Parkings: 2

Area: 892 m2

Type: House



Adele Colman
0414876211



Lewis Thyer
0430043806

\$831,000

Sometimes it may seem impossible to find a home that ticks a lot of the must have boxes, and this home at 13 Chelmsford Avenue does just that! First, the charm is there, this authentic classically proportioned weatherboard is set back on a manageable 892M2 garden block, there is a sweet north facing verandah, deep enough for a comfy cane lounge setting so you can soak up that winter sun whilst watching the neighbourhood comings and goings. Step inside to the roomy lounge with an open fire and original hardwood floors. Don't feel like fussing with the fire? Well, just hit the central heating button and dial up the temperature of your choice, simple as that! Off this room are the three bedrooms, spacious in proportion with high ceilings and those terrific tall sash windows we all know and love. Further along is the kitchen with loads of bench space and storage that overlooks the dining space and lounge room. The bathroom is generous with a spa bath and a separate shower. At the rear of the house is a generous laundry room which then flows to the rear wrap around deck. There is a lot to like here - there is even a double lock up garage! This a great home to just move into and enjoy or for the astute investor a small refresh would reap the rewards. So come have a look, the potential is there in spades - the location is great close by to the renowned Blackheath Golf Course! A round of golf and a long lunch anyone? • 892M2 Garden Block • Double Garage • Potential in spades • Close to the golf Course